



nəx^wqíyt nəx^ws'Káyəm
PORT GAMBLE S'KLALLAM TRIBE

COMMUNITY MEMO – MAY 5, 2025

Frequently Contacted Numbers

Billing Office: 360-297-6235

Career & Education: 360-297-6317

Community Outreach:
360-297-9678

Elders': 360-297-9630

Enrollment: 360-297-6217

Early Head Start: 360-297-6300

Front Desk: 360-297-2646

Health Services: 360-297-2840

Housing: 360-297-6350 Ext 5827

Natural Resources: 360-297-6284

Public Safety: 360-297-9666

CURRENT NEWS & EVENTS

Abraham's House of Charity

Abraham's House of Charity will be here in the Tribal Gym on May 10th. With household items - Everything is free and donations are appreciated. You will be responsible for towing and bringing home your items.

Indian Taco Fundraiser

Seeking donations for an Indian Taco fundraiser. Items needed include: salsa, sour cream, cheese, oil, flour, hamburger meat, ect... Please drop donations off at the Tribal Kitchen by May 8th. All donations will be greatly appreciated.

All proceeds from the fundraiser will go to Abraham's House of Charity..

Children and Family Services

Family Assistance Program Happening

LIHEAP is getting ready to come to a close, please check in with Sandra Horton about the availability of the program. As a reminder, it takes up to one to two weeks for the payment to show up on the account.

Payments are sent out on Fridays. You must have a balance owed on the account. You can contact Sandra at shorton@pgst.nsn.us or via phone or text at (564)245-0492

TANF

Is always operating we now have two case managers to help assist tribal members who may qualify for the program, if you have questions please contact Sandra Horton. shorton@pgst.nsn.us or via phone or text at (564)245-0492

Family Assistance

Is currently working to have all three staff trained to administer the SNAP program. As a reminder we can only process Food Benefits. Shayna Reynolds recently finished all the required training and Jacob P. Sullivan begins his at the end of April. Sandra and Shayna can now administer SNAP applications.

As a reminder it takes three staff members to issue a card, it is best to check in with the Children and Families Front desk to make sure all three staff members are onsite. Or you can call Sandra at 360.297.9650 or text at 564.245.0942

The food bank is open from 8-11:45 and 1:15-4 Monday through Friday, please come into the Children and Family Services Building and speak with Miranda at the front desk. As a gentle reminder each family may use the food bank once a week and we ask you to wait in the lobby or in your car while a CFS Staff member assists.

Please let the staff know if there are any allergies, we will do our best to provide alternatives but due to funding may not have any on hand. Please be sure to be accurate with household members, this is how we determine how much we can give. If you bring a list of most needed items, we will do our best to fulfill the items needed. We do have diapers and hygiene items as well as food items.

Family Assistance

The Port Gamble Site for EBT services will operate 5 days a week from 9am-11:45am and 1pm-3pm

Food Bank

When accessing the food bank please see anyone in the Children and Family Services building between 8:15am - 11:45am and 1:15pm- 4:15pm.

We will no longer be doing food deliveries for the food bank. The only exceptions for delivery include emergencies or if you are a home bound Elder. If you cannot come during business hours, please contact any CFS Staff and you can do a porch pick up at the food bank.

Chair Volleyball

We are still holding chair volleyball in in the Tribal Gym Tuesday, Wednesday, and Thursday

Elder's Program Meal Service

Elder's meals are available for pick-up only between 11:30am -12:30pm.

We enjoy all the participants coming for the delicious meals prepared by staff but if you do not regularly participate in the lunch program, you need to call the kitchen at 360-297-9627 so we can plan accordingly.

Energy Logs

Elders we now have energy logs, come by the Elders Center or give us a call for further information!

Elders: For those of you not planning to attend the big out-of-state trip and want to watch baseball Chehalis Tribal Days is coming up fast! Call 360-297-9630 to be put on the list.

PGST ELDERS TRIP CLARIFICATION:

We are not accepting any more signups for the elder's trip. The waitlist consists of the elders who paid on April 1, after we reached 100 signups, and are already on the waitlist. It was advertised that we were not taking any more signups.

If you did not sign up on that date, we are not accepting more signups. Please contact Cheryl Miller if you have any questions. cmiller@pgst.nsn.us or office 360-297-9665 or my cell is 360-689-7958. Thank you.

The 2025-2028 Temporary Assistance for the Needy Family Plan has been updated and is now open for public comment. The new proposed plan can be found in the Children and Family Services Building.

Public comments will end on May 18th For questions or comments regarding the plan please contact Sandra Horton at shorton@pgst.nsn.us or Maria Huynh at mtran@pgst.nsn.us

The Culture Department proudly celebrates the rich heritage of the Port Gamble S'Klallam Tribe!

For the latest on our cultural events, check out our Tribal website at

<https://pgst.nsn.us/current-news-events/> or follow us on Facebook at Port Gamble S'Klallams.

You can also sign up for community text alerts!

We love hearing from you! Feel free to visit the Cultural Office for updates or suggestions. You can also reach out to our team:

Rowan Bunich, Cultural Program Assistant:

360-297-9656,

rbunich@pgst.nsn.us

Alicia Fulton, Cultural Programs

Manager:

360-297-9657,

aliciaf@pgst.nsn.us

Save the Date:

Spring First Foods Celebrations

Coming Soon!

Court

Survivor and Victim Services

If you feel unsafe and need help for yourself or someone you care about, as an advocate, we provide confidential help, safety planning, resources/referrals, education, and empowerment contact Teresa Swope at 360-297-6304 or via email at tswope@pgst.nsn.us

Eagle's Catch

EFFECTIVE IMMEDIATELY

The Eagles Catch deli "store deli" is now operated by the Casino. They will no longer be accepting the Gliding Eagle discount cards.

HOWEVER, PGST members can show their Tribal enrollment card and receive a 20% discount.

Note: This only impacts the Deli, you can still use your discount card at the front cashier on gas and other items.

Enrollment

Enrollment & Tribal Records
The Enrollment & Tribal Records department is committed to helping with the enrollment of members, family trees, ordering birth certificates, etc. as well as, maintaining tribal records and archives.

The Enrollment department can order birth certificates for those needing them to go through the enrollment process and administer DNA. You can also get a reimbursement for Washington State enhanced ID's.

Please reach out to Jordan DeCoteau if you have any questions or would like more information. You can reach her by email at enrollment@pgst.nsn.us or phone at 260-297-6217.

Health Services

CHR's:

Call 360-297-9633 to speak with a member of our team, we offer health transports and assistance with the pick up/delivery of prescription delivery

Dental and Medical Clinic:

Call 360-2970-2840 to schedule an appointment or speak to a receptionist.

Mental health support line: 988
Call or text 988 for 24/7 mental health emergency support. Press 4 for Native & Strong Lifeline

Public Health:

After hours Triage Nurse line 360-297-9613

Saturday Urgent Care Clinic hours are 9am to 5pm, closed for lunch 12pm to 1pm.

If you are experiencing a medical emergency call 911

Closure Dates:

Thursday, May 15, 2025

Monday, May 26, 2025

Housing

Port Gamble S'Klallam Housing Authorities, Annual Performance Report is available for public review until May 16, 2025.

Hard copies are available in the Housing Office.

Warrior Ridge Update

Please **do not** drive through Warrior Ridge Phase II – this is an active construction site with contractors on site working to complete Phase II.

Housing is planning a Ribbon Cutting on June 12th at 2pm where community members will have the opportunity to walk through some units.

Housing

Homeowner Assistance Fund:

Are you a PGST member who owns your home? You may qualify for Utilities and Mortgage assistance through the Homeowner Assistance Fund Program (HAF) through Housing.

These funds were appropriated to PGSHA by the Dept of Treasury to help keep people in their homes, and not lose their utilities such as power and water due to the financial burdens after Covid.

To see if you qualify please turn in a complete application for 2025 to Stormy either in person, by mail to 32000 Little Boston Rd NE, Kingston, WA 98346 or via email at stormy.purser@pgst.nsn.us

Apps are available in the Housing Authority lobby and on the Tribe's website under Entities > Housing Authority. Call the housing front desk line for any questions. (360) 297-6350 ext 0

Natural Resources

Just a reminder that wood cutting permits are required to harvest firewood on the reservation. The only exception to this are log piles that the Tribe has made available. Designated harvesters are allowed according to our permit restrictions. Permits are available to be checked out at Natural Resources and you may receive up to 5 permits at a time for a total of up to 20 permits per year. If you live off reservation, a separate wood hauling permit is required. At no time is it legal to sell firewood from the forested areas of the reservation.

Also, permits are for personal use only and must be used only in our designated wood cutting areas located across from S'Klallam Hill/upper housing. Windfallen trees can be harvested in designated areas in the access road behind the ball field and skate park as long as they can be harvested near the road or wood carried out on foot. Please do not drive vehicles or sport utility vehicles off the main forest road as this damages healthy trees. Paper copies of the designated cutting areas are available at natural resources. You can call Nikki at 360-865-2678 if you have questions.

Child and Family Services Special General Council Zoom

When: May 6, 2025

Where: Zoom Only

Time: 5:00pm

Zoom Information:

Meeting ID: 885 7852 0456

Passcode: 938290

Council Meeting

When: May 12, 2025

Where: Tribal Council
Chambers

When: 9:15am

Zoom Information:

Meeting ID: 841 6311 3260

Passcode: 444615

Scan Me to be sent
to the Tribal Council info.
page on the PGST Website



Tribal Council values the input given by these advisory groups (see attached policy and letter of interest form). These positions will be appointed 2025 through 2029 (4-year terms). If you are interested, please fill out the Letter of Interest form attached and turn it in, or email it back to CouncilSupport@pgst.nsn.us May 28th 2025.

Child Protection Team Advisory Committee (5 position)
The Child Protection Advisory Committee makes recommendations on the management and/or resolution of open Indian Child Welfare cases.

CPT meets once a month, the first Monday two weeks prior to the civil court date, from 1:30p-3:30pm. Members receive a \$100 stipend for each meeting attended.

CPT Committee members are bound by federal and Port Gamble S'Klallam Tribal Laws and regulations regarding issues of confidentiality. All information and sources of information are strictly confidential.

Public Safety

As always we ask you to utilize the Kitsap 911 system for any law enforcement needs, we try to limit the amount of time officers are in the office.

The 911 system is the quickest and most efficient way to contact your officers. The Kitsap 911 system handles both non-emergency and emergency calls.

Notice of Exclusion to the Community

for the following individuals:

Faith Marie Miller

Sarah J O'Shea

Ryli R Robinson

Felicity Ennis

Dawn M Hull

Notice to Community Harboring an Excluded Person is a Crime- Any person who harbors a person who is excluded or allows that person in his home, can be charged with a Class C offense. Call 911 to report excluded individuals on the reservation.

S'Klallam Worship

Upcoming: Sunday Service 10:00am

"Refiners Fire" Prayer Sundays 6:30pm

"Rooted" Tuesdays @ 6:30pm

"Guy Time" @6:30pm Tuesday, (First Tuesday of month)

"Girl Time" will be announced.

"Youth" Sundays @ 6:30pm

"Splendor" (Music w/ Children/Youth) 1x per month with Ruthy - Announced children.

Questions? Call (360)271-8760.

Youth Services

The Tribal Healthy Youth Survey will be administered to 6th-12th graders through survey monkey. The survey is optional, anonymous, and includes a variety of in-depth question to determine areas of need and services for youth and the community.

Youth receive \$5 for survey completion.

The survey will be offered to KHS students on 4/22/25 and 4/24/25 and KMS 4/28/25, 5/1/25, & 5/2/25. A survey link will be available for any other PGST youth. Questions: Contact Steph Carpenter



nəx^wqiyt nəx^ws'káyəm
PORT GAMBLE S'KLALLAM TRIBE

OPEN POSITIONS

5/5/25

MEDICAL
ASSISTANT
CLOSING 5/6/25

ACADEMIC COACH
CLOSING 5/9/25

CHILD WELFARE
CASEWORKER
CLOSING 5/13/25

OUTDOOR
EDUCATION LEAD
TEACHER
CLOSING 5/15/25

BEHAVIORAL
HEALTH MANAGER
CLOSING 5/23/25

ACCOUNTANT

MENTAL HEALTH
COUNSELOR

EC CLASSROOM
ASSISTANT OC

PUBLIC SAFETY
OFFICER I AND II

YOUTH SERVICES
WORKER

CHILD SUPPORT
PROGRAM MANAGER

DENTAL HYGIENIST

GRANT WRITER

PHYSICIANS
ASSISTANT/ARNP

TO APPLY SCAN THE QR CODE OR SEE OUR WEBSITE AT
[HTTPS://WWW.PGST.NSN.US/EMPLOYMENT.](https://www.pgst.nsn.us/employment)



CONTACT BETWEEN THE HOURS OF 8:00AM-4:30PM. MAIL CAN BE DROPPED OFF AT THE
TRIBAL CENTER IN THE HUMAN RESOURCES BOX.

JENNIFER WRIGHT-TOM, ADMINISTRATIVE ASSISTANT II: (360) 297-6258
[CONTACT WITH GENERAL HR QUESTIONS AND SHE WILL DIRECT YOUR CALL]

AUDREENA TOM, RECRUITER: (360) 297-6218
[CONTACT WITH QUESTIONS ABOUT JOB POSTINGS]



NOW HIRING!

CURRENT JOB OPPORTUNITIES

Friday, May 2nd, 2025



Back of House F&B:

DMO: \$18
Line Cook: \$21

Gaming Floor:

Security Officer: \$22
Slot Tech: \$21
EVS: \$19

Hotel:

Houseperson: \$18.25
Housekeeping Supervisor: \$23-\$25
Night Audit: \$19

Gliding Eagle:

Barista: \$17.50
Cashier (on-call): \$17.50

Minder Meats:

Sales and Marketing Associate: \$25

Gliding Eagle:

Barista: \$17.50
Cashier (on-call): \$17.50



For more details or to apply, scan the QR code above or visit www.noo-kayet.com
www.thepointcasinoandhotel.com or email mnichols@noo-kayet.com

****PGST Youth 16-18 years of age****

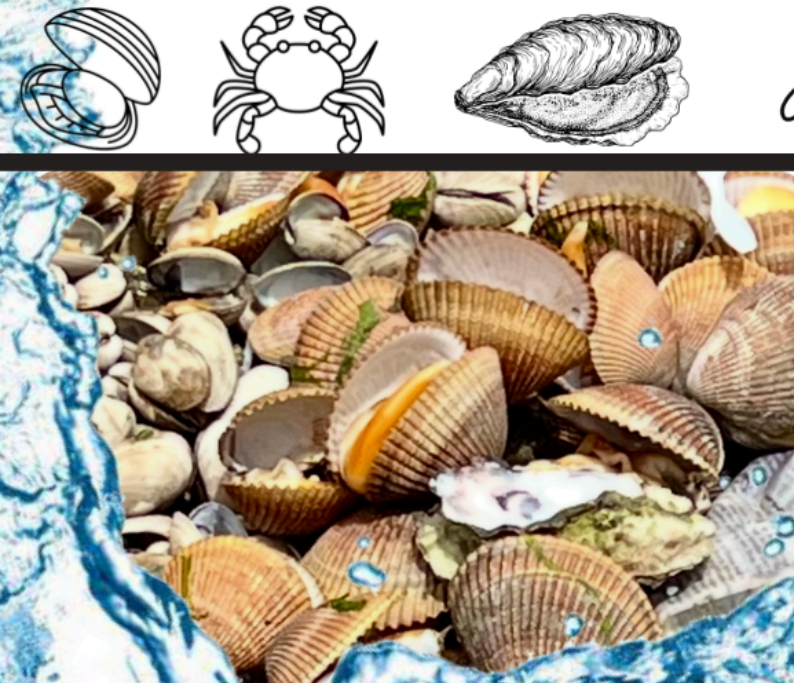
Clam Bake Cooks Needed

The Port Gamble S'Klallam Tribe built a positive reputation for hosting and feasting well with guests, The traditional clambake is one of the features admired most.

For the July 28th 2025 Canoe Hosting event we are looking for a team of four or more clambake cooks to receive and keep live shell fish, transport from water, prepare a fire, cook clams, pan serve, and clean up after.

Fire wood and other supplies will be provided and the clam bake will take place at Point Julia.

If interested please submit a letter of interest including your contact information and how many people will be in your team to Jodi F. at jodif@pgst.nsn.us or (360) 297-6253 or contact the Tribal Center front desk (360) 297-2646



Little Boston Library

CHECK IT OUT AT THE LITTLE BOSTON
LIBRARY

WE ARE OPEN 10 AM TO 6 PM MONDAY-
THURSDAY, FRIDAYS 10 AM TO 5 PM AND
SATURDAYS 10 AM TO 2PM. CALL 360-860-
5080 TO PLACE A HOLD, MAKE A CURBSIDE
APPOINTMENT, OR SPEAK TO STAFF
PERSON.

**THE LIBRARY WILL BE CLOSED MAY 26TH
IN OBSERVANCE OF THE MEMORIAL DAY
HOLIDAY.**

JOIN US @ THE LIBRARY!

MAY 1, 8, 15, 22, 29 @ 2:00 PM -
PUZZLE CLUB

MAY 1, 8, 15, 22, 29 @ 11:30 AM --
FAMILY STORYTIME

MAY 6 @ 1:00 PM -- LITTLE BOSTON 1ST
TUESDAYS BOOK GROUP

MAY 7 @ 10:00 AM -- LITTLE BOSTON 1ST
WEDNESDAYS BOOK GROUP

MAY 7, 14, 21, 28 @ 1:00 PM -
CRAFTERNOON

MAY 19 @ 3:00 PM - MAKER MONDAY - SEW
YOUR OWN KEY FOB

MAY 14, 21 @ 3:30 PM -- READ TO A DOG

READING RECOMMENDATIONS

CURVE! WOMEN CARVERS ON THE NORTHWEST
COAST CURATED BY DANA CLAXTON (WOOD
MOUNTAIN LAKOTA FIRST NATION): THOUGH
WOMEN OF THE NORTHWEST COAST HAVE
LONG CARVED POLES, CANOES, PANELS,
AND MASKS, MANY OF THESE ARTISTS HAVE
NOT BECOME AS WELL KNOWN OUTSIDE
THEIR COMMUNITIES AS THEIR MALE
COUNTERPARTS. (NONFICTION • BOOK •
2024)

MURDER ON THE RED RIVER: A CASH
BLACKBEAR MYSTERY BY MARCIE R.
RENDON (MINNESOTA CHIPPEWA
TRIBE): IN THIS AWARD-WINNING
DEBUT, 19-YEAR-OLD OJIBWE WOMAN
RENEE "CASH" BLACKBEAR, A
FORMER FOSTER CHILD, USES HER
VISIONS (FICTION • BOOK • 2021)

MAGAZINES
AMERICAN PATCHWORK & QUILTING
PUBLISHED SIX TIMES A YEAR.
A SIGNATURE CRAFT MAGAZINE FROM
THE PUBLISHERS OF BETTER HOMES
AND GARDENS.

SEWING ARTICLES INCLUDE:
• BOX OF CHOCOLATES - WALL
HANGING
• 2024/2025 BLOCK OF THE MONTH
• FAIR ISLE FLAKES - QUILT
INSPIRED BY A SNOWFLAKE SWEATER
• LOG CABIN AND HEART BLOCK
CROSS STITCH PATTERN

ALLRECIPES PUBLISHED SIX TIMES
A YEAR.
TO HELP MAKE YOUR COOKING
ADVENTURES A SUCCESS

YUMMY ARTICLES INCLUDE:
• DOUGH IT YOURSELF
• VEG UP!
• SECRET INGREDIENT
• HEALTHY SPINS

Community Meal & Input Session

You're invited to enjoy a complimentary meal and share your hopes and concerns for the future of housing for the Port Gamble S'Klallam Tribe!

As part of an ongoing housing needs assessment in our community, we are holding a public input session to better understand our community members' perspectives on Port Gamble S'Klallam Tribe housing. Your insights will help us determine local housing desires and preferences, housing-related strengths in our community, and the next steps for housing development, including decision-making and potential financing.

Door prizes will be available, and all who complete the housing needs assessment survey will be entered into a **drawing for prizes from \$100-\$600!**

When:

5-8 p.m. Thursday, May 8

Where:

The Longhouse



If you are unable to join the community meal session, use your phone to scan the QR code or complete the survey online at <https://bit.ly/42tbaCC>

This input session is part of a housing needs assessment the Port Gamble S'Klallam Tribe Housing Authority is conducting with the help of Sweet Grass Consulting. This study will help us better understand our community's housing-related needs and desires, and it will provide essential data for bringing new housing-related resources to the Port Gamble S'Klallam Tribe.

Questions?

For more information or to request assistance, please contact max@sweetgrassconsulting.net.

Community Event Recap -April 22, 2025

PGST Safety and Emergency invited Kitsap County Search and Rescue Teams to the rez to provide information to the community about their organizations, show off their gear, and talk about what their programs provide.

Three teams were able to attend: Olympic Mountain Rescue, Washington Explorer Search and Rescue, and Kitsap County Search Dogs. Each search and rescue team are made up by volunteers of all ages, many have a day jobs and volunteer on the side, others are retired and volunteer to give back to the community.

The SAR team would like to squash a couple rumors.

Do not wait 24-48hrs to report someone missing. If you know someone is missing, a hiker, someone out for a walk, elderly with dementia, or a child with autism for example, that is different than the broader term "missing person". The quicker you alert authorities of someone missing the better the chances are of locating them.

There is no charge for Search and Rescue Teams when they are activated to find someone.

SAR Teams are fully volunteer oriented, and they get their funding from donors and grants.

We had around 30 guests attend the event and enjoy a meal. Each team had set up a table with pamphlets, gear, pictures, and stickers available. We spent the first 30 minutes enjoying dinner and chatting with the teams.

Olympic Mountain Rescue (OMR) is 1 of 9 Mountain Rescue Units that operate in Washington State. They are skilled group of volunteer climbers dedicated to wilderness rescue and mountain safety education. olympicmountainrescue.org

Washington Explorer Search and Rescue (ESAR) has been serving Kitsap County, and the surrounding are since 1978. Their unit is made up of youth and adult members, with youth eligible to join as early as 14 and encouraged to train into leadership roles within the organization. -kitsapesar.com

Kitsap County Search Dogs have several different specialty teams, which are called out when in need by the Kitsap County Sheriff. Their unit is comprised of professional volunteers and their mission is to provide trained canine teams to assist in the locating of missing persons. - kitsapsearchdogs.org

The SAR Teams stressed the 10 items to bring with you in the woods.

Navigation – A map, a compass, or GPS.

Sun Protection – Sunglasses, sunscreen, and hat.

Insulation – Jacket, hat, gloves, and maybe a small blanket.

Illumination – Flashlight, headlamp, something other than your phone flashlight.

First aid kit.

Fire – Lighter, matches.

Knife or multi tool.

Nutrition – Bars, snacks.

Hydration – stay hydrated, bring extra water.

Emergency shelter – small tent or tarp to keep you dry.


We capped off the event with a demonstration by one of the search dogs. We filed out the back door of the gym to playground area and one of the dog handlers instructed M. Jones and S. Sullivan to hide. The search dog tracked them down with ease, making a real quick demonstration/

PGST Safety and Emergency wants to extend a big thank you to the SAR Teams and to all who showed up and made this a successful event.

Nick Miller -PGST Safety and Emergency Coordinator

May 2025

Port Gamble S'Klallam Youth Services

Sunday	Monday	Tuesday	Wednesday	Thursday	Friday	Saturday
YOUTH CENTER MAIN LINE 360-297-6279 31850 NE Little Boston Rd PGST Youth Center  Facebook	May is: - Mental Health Awareness Month - National Physical Fitness and Sports Month - National Celiac Disease Awareness Month		*Tribal Healthy * Youth Survey 6th-12th Grade Community Youth take the survey, collect your \$5 & entered into cash drawings.	1 KHS Home Girls Softball Game 4pm U/K) Youth Leadership 3:15pm (E/M/C) 4th-5th Grade Group 4:30-5:30 (S/A) Open Gym 4th-12th: Until to 5:30pm 16yrs+:6pm	2 -----(S/K) Parent/Teen Retreat, Ocean Shores----- Heronswood Spring Sale 5/3-5/4/25 OYC til 5:30pm	3 -Woflie PTO Auction- Parent & Teen Retreat @ Ocean Shores YC Closed Sacred Water Jam in Suquamish- No Van
4 (S/K) Parent/Teen Retreat, Ocean Shores (A/S) For batting cage and baseball field use, contact Scott or Andrew for more information.	5 MMIW/R Walk Meet at the Gliding Eagle @ 12pm (S/A) Open Gym 4th-12th: Until to 5:30pm 16yrs+:6pm	6 KHS Home Varsity Baseball Game 4:15pm (S/SC) HS Support Group 3:15-4:15 GC Special Meeting: Child and Family Services @ 5pm (S/A) Open Gym 6th-12th: 3:00-4:30pm 1st-3rd: 4:45-5:45pm 16yrs+:6pm	7 ---U/K/E) Camas Bake/Whidbey Island--- Song & Dance 5:30pm In Longhouse YC Closes 5:30pm No Gym	8 KHS Home Girls Softball Game 4pm/ KMS Home Football/Drill Game 4pm (E/M/C) 4th-5th Grade Group 4:30-5:30 No Gym	9 (C) 6th-12th Dungeons & Dragons Session YC Closes 5:30pm	10 (C) CKA Decolonize Education Coastal Jam 6th-12th Grade
11 <u>Young Adult Hours</u> The Youth Center is open for any young adults (Ages 18-24 post high school) to come hang out Monday-Friday 12-2 pm *1:30 on Wed*	12 Youth and Elders Social @ 3:15pm in Elder's Center OYC til 5:30pm	13 Cooking w/ Casey 3:30pm (S/SC) HS Support Group 3:15-4:15 No Gym	14 c̓ayiči Meeting 1pm U/K) MS Support Group 2:15-3:15 Mental Health Awareness Month Event 3:30 pm No Gym	15 KMS Home Football/Drill Game 4pm U/K) Youth Leadership 3:15pm (E/M/C) 4th-5th Grade Group 4:30-5:30 No Gym	16 <u>Viking Fest</u> (C/A) 6th-12th Quarters Arcade Trip Meet @ Noon	17 <u>Viking Fest</u> Youth Canoe Awakening & Canoe Beach Day 11 am Spring Foods Celebration Poutine Julia @ 1 pm
18 <u>Youth Center After School Open Hours (OYC):</u> 6th-12th Grade: Mon til 5:30pm & T-Th til 7pm 4th-5th Graders: Mon-Fri til 5:30pm Rides Home: 5:30pm (4th/5th) & 7pm	19 4th/5th Outdoor Group w/ Hannah 4:30-5:30pm @ Youth Center OYC til 5:30pm (S/A) Open Gym 4th-12th: Until to 5:30pm 16yrs+:6pm	20 (S/SC) HS Support Group 3:15-4:15 (S/A) Open Gym 6th-12th: 3:00-4:30pm 1st-3rd: 4:45-5:45pm 16yrs+:6pm	21 Strong Families Fair Song & Dance 5:30pm In Longhouse YC Closes 5:30pm (S/A) Open Gym 4th-12th: Until to 5:30pm 16yrs+:6pm	22 U/K) Youth Leadership 3:15pm (E/M/C) 4th-5th Grade Group 4:30-5:30 yehúmeet Community Wellness Event 5:30pm YC Closes at 5 pm No Gym	23 (C/D) Inter-Tribal Song & Dance Longhouse @ 5:30 pm	24 Youth Center Closed Family Time-
25 <u>Extra-Curricular Scholarships</u> *Current round July 1, 2024 to June 30, 2025 *See Youth staff for eligibility criteria Toddler/Preschool=\$500 K-12= \$1000	26 NKSD: No School -Youth Center- Closed- Memorial Day (S/A) Open Gym 4th-12th: Until to 5:30pm 16yrs+:6pm	27 (S/SC) HS Support Group 3:15-4:15 (S/A) Open Gym 6th-12th: 3:00-4:30pm 1st-3rd: 4:45-5:45pm 16yrs+:6pm	28 U/K) MS Support Group 2:15-3:15 Culture Hour: 3:30-4:30pm (S/A) Open Gym 4th-12th: Until to 5:30pm 16yrs+:6pm	29 U/K) Youth Leadership 3:15pm (E/M/C) 4th-5th Grade Group 4:30-5:30 (S/A) Open Gym 4th-12th: Until to 5:30pm 16yrs+:6pm	30 (E) Community Family Garden Activity (C) 6th-12th Movie Trip	31 KHS Prom U) UW Spring Coastal Jam (C/M) 4th & 5th Grade OYC & Movie Night
Steph Carpenter (SC) 297-6277/981-6106 sdixon@pgst.nsn.us	Joe Price (J) 360-297-6275 jeprice@pgst.nsn.us	Scott Moon (S) 360-297-6250 scottm@pgst.nsn.us	Karleigh Gomez (K) 297-6276/360-731-4048 karleighg@pgst.nsn.us	Casey Jones (C) 297-6278/689-7455 cjones@pgst.nsn.us	Erica Hankin (E) 360-621-6470 ehankin@pgst.nsn.us	Andrew Ives (A) 360-271-5338 aives@pgst.nsn.us

Call for Artists: Wolfle Elementary School Gymnasium Art Project

The Culture Committee invites artists to submit proposals for a new art installation in the recently remodeled Wolfle Gymnasium. The School is seeking to partner with the Port Gamble S'Klallam Tribe as this project aims to celebrate and represent the rich culture and stories of the Port Gamble S'Klallam people.

Project Overview:

We are seeking pieces that reflect the cultural significance of the Port Gamble S'Klallam tribe. Artists are encouraged to draw inspiration from local legends and other narratives that embody the spirit of our community.

Themes being Considered:

- Storytelling
- Nature
- Sea Wolf Story
- Sports/Games
- Watershed Life

Details:

Timeline: The gym remodel is set for completion in March, with a project start date in March 2024. The project will need to be completed by the end of July/Summer 2025.

Budget: The total project budget is \$10,000, which includes all materials, installation and labor costs.

Space Information: We will provide a visual walkthrough of the space, including details on size and the color palette (neutral earth tones, muted greens, and reds). This will be for a wall approximately 8'-8" high x 8'-0" wide.

Medium: There are no restrictions on the type of medium; artists can use vinyl, paint, or any other materials that suit their vision and the space. Flexibility is available in terms of installation methods, but the school has requested panels, or forms of art that can be moved to another location if need be. Meaning you do not have to work on site.

Maintenance: We seek to engage artists in discussions about the long-term care of the installation, ensuring it remains a vibrant part of the school community.

Submission Guidelines:

Artists interested in participating should submit their rough ideas, including concepts, sketches, and any relevant experience, by May 5th 2025. Selected artists will be invited to the following Culture Committee for further discussions and to refine their proposals. Please reach out with any questions!

We look forward to celebrating the cultural heritage of the Port Gamble S'Klallam community through this exciting opportunity.

For questions or further information, please contact Alicia Fulton Port Gamble S'Klallam Tribe Culture Program Manager 360-689-5021 Aliciaf@pgst.nsn.us



2025 PGST Little Boston Canoe
Hosting Vendor Registration

CALLING ALL VENDORS

PGST Canoe Hosting Event

Monday, July 28, 2025

Register now to secure your spot!
Sign up before June 1st, 2025

REGISTER NOW



360-990-3233

Register Online - Scan QR

2025 3RD ANNUAL

SPRING FIRST FOODS CELEBRATION

WHERE: POINT JULIA BEACH

DATE: MAY 17TH 2025

TIME: 2:00PM



**COME JOIN US
FOR A
DELICIOUS
FEAST OF
TRADITIONAL
SKLALLAM
FOODS!**

TENATIVE MENU

SALMON ON A STICK

CLAMBAKE

HALIBUT

NETTLE RECIPES

CAMAS

TEAS, DESSERTS, AND SO MUCH MORE!



**OPEN TO PGST TRIBAL
COMMUNITY.**

**WANNA VOLUNTEER AND
LEARN HOW TO COOK
TRADITIONAL FOODS?
CONTACT THE CULTURE
DEPARTMENT AT
360-297-9656 OR EMAIL
RBUNICH@PGST.NSN.US**

**BRING YOUR STORIES,
DRUMS AND CAMPING
CHAIRS.
WE WILL TAKE CARE OF
THE REST!**



RENTON TECHNICAL COLLEGE CAMPUS TOUR

**MAY 29, 2025 @
10:00 AM**

PGST Career and Education
will be taking a van

Sign Up

CONTACT US

sasheen@pgst.nsn.us

svebber@pgst.nsn.us



PGST Community
Health Center



STRONG FAMILY FAIR

SAVE THE DATE

Calling all families! Get ready for our annual Strong Family fair to learn about all of the amazing resources available in the community.

WEDNESDAY

21 MAY 2025



2:30 PM- 5:30 PM



**COMMUNITY HEALTH
CENTER COURTYARD**

32020 LITTLE BOSTON RD NE



Sign up for a booth below

SIGN-UP



BATES TECHNICAL COLLEGE CAMPUS TOUR

**MAY 13, 2025 @
9:30 AM**

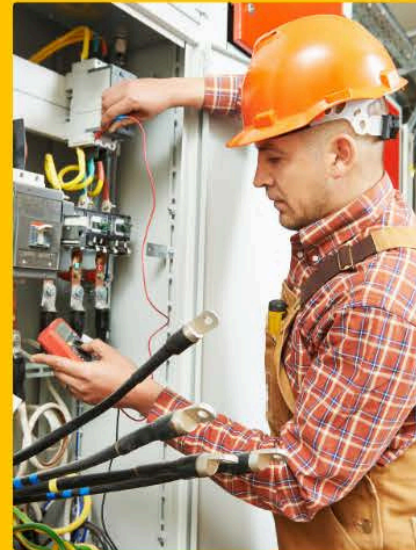
PGST Career and Education
will be taking a van

Sign Up

CONTACT US

sasheen@pgst.nsn.us

svebber@pgst.nsn.us



PORT GAMBLE SKLALLAM

RECOVERY PICNIC

FOOD - GAMES - FUN ACTIVITIES

COME CELEBRATE YOUR
SOBRIETY AND RECOVERY WITH US.

SUNDAY MAY 18TH AT 1:00PM

POINT JULIA BEACH

WE ARE GOING TO HAVE BURGERS,
HOTDOGS, AND SALADS. BRING YOUR
FAVORITE SIDE DISH.

CONTACT

DAYNA BENEFIELD 564.654.7349

OR

CARMELITA PURSER 564.245.0964





nəx^wqíyt nəx^wsʔáyám'

PORT GAMBLE S'KLALLAM TRIBE

Community Housing Needs Survey

Take our survey and win cash prizes!

The Port Gamble S'Klallam Tribe Housing Authority, with the help of Sweet Grass Consulting, is conducting a housing needs assessment in our community. This study will help us better understand the housing-related needs and desires of our community, as well as provide essential data for bringing new housing resources to Port Gamble S'Klallam Tribe. As part of this study, we have put together an **anonymous** survey to gather community insights from anyone 18 years or older.

Enter cash prize drawings by providing your name and contact information when you fill out the survey. You'll be entered to **win one of ten \$100 prizes, four \$250 prizes, or one grand prize drawing of \$650!** The drawing will occur in early August, after the survey has closed.

Your answers will help us determine local housing desires and preferences, strengths in our community related to housing, and next steps for housing development including the decision-making and potential financing of housing efforts.



Use your phone to scan the QR code
or complete the survey online at:
<https://bit.ly/42tbaCC>

Questions?

For more information or to request assistance,
please contact max@sweetgrassconsulting.net.



Library Happenings in May



Adults

Little Boston Book Group

This month we will discuss "Remarkably Bright Creatures" by Shelby Van Pelt.

Tuesday, May 6, 1:00 p.m. & Wednesday, May 7, 10:00 a.m.

CrafterNoon

Meet and socialize with other community crafters. Bring along a project to work on and make new friends.

Wednesday, May 7, 14, 21 & 28, 1:00-2:00 p.m.

Puzzle Club

Find your inner "piece" while solving jigsaw puzzles with other puzzle enthusiasts. No experience required.

Thursday, May 1, 8, 15, 22 & 29, 2:00 - 4:00 p.m.

Maker Monday: Sew Your Own Key Fob

Drop by and learn basic sewing skills while making your own fabric key fob.

Monday, May 19, 3:00 - 5:00 p.m.



Kids

Read to a Dog

Choose a story and read to a dog. Grades K-5.

Wednesday, May 14 & 21, 3:30 - 4:30 p.m.



Little Learners

Family Storytime

Stories, songs, rhymes, and full-body movement designed to build early literacy skills and encourage social and emotional development.

Thursday, May 1, 8, 15, 22, & 29, 11:30 a.m. - noon



KITSAP REGIONAL



Library

**For more information
visit KRL.org/events**

INDIAN TACO FUNDRAISER

**INDIAN
TACO
\$10**



**FRIDAY, MAY 9TH
10 AM TO 1 PM
PGST KITCHEN**

All proceeds will go to a donation to
Abraham House Charity.

COMMUNITY MEETING

(serving as a PUBLIC HEARING)

ON PROPOSED

Utility Fee Schedule

**WEDNESDAY
MAY 28, 2025
NOON**

Health Clinic Executive Conference Room

The Fee Schedule is set annually by the Utility Board. The Utility Board shall hold a public hearing whenever a new fee schedule is proposed for adoption.

CONTACT Roxanne Hockett, Utility Board Chair, at 360-297-6249 or roxanneh@pgst.nsn.us for more information.

Door Prize WILL BE RAFFLED for participants by drawing at meeting.

Food will be provided.