

Please make yourself comfortable!

**WELCOME**



Enjoy the snacks.  
We will begin in  
a moment!





## AGENDA

- Welcome
- Energy Vocabulary
- Reading Your Utility Bill
- Energy Efficiency Changes
- Question Time!

## REMINDERS



- Feel free to step away from the event at any time!
- **All** questions are good questions!
- Email will be sent with follow up resources. 😊



Port Gamble S'Klallam Tribe - June 4, 2025

# ENERGY

@ HOME



# ENERGY VOCABULARY

## Energy Efficiency

Using less energy to perform the same task.

A **kilowatt** (kW) is a measurement of **power**



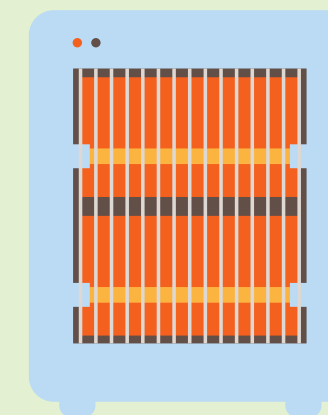
This space heater requires **1 kW** of **power** to run

A **kilowatt-hour** (kWh) is a measurement of **energy**



If the space heater runs for **4 hours**, it uses **4 kWh** of **energy**

Source: Solar Reviews



This space heater requires **500W** of **power** to run and creates the same amount of heat.

***It is energy efficient!***



# ENERGY EFFICIENCY

## IN ACTION

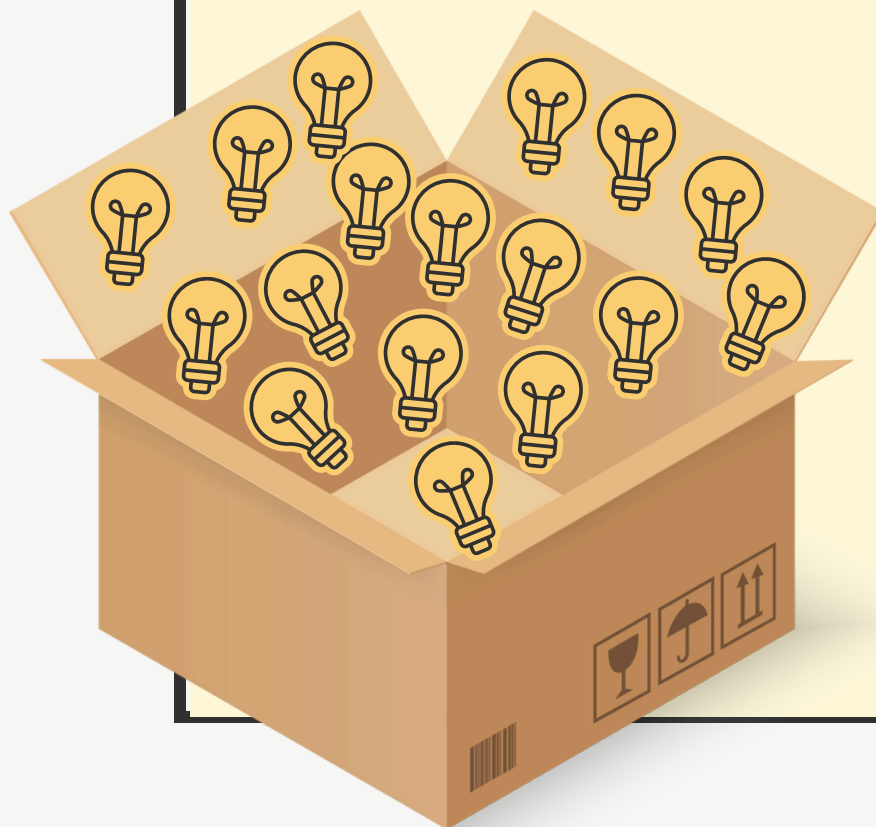


60W Standard light bulb  
(Incandescent)

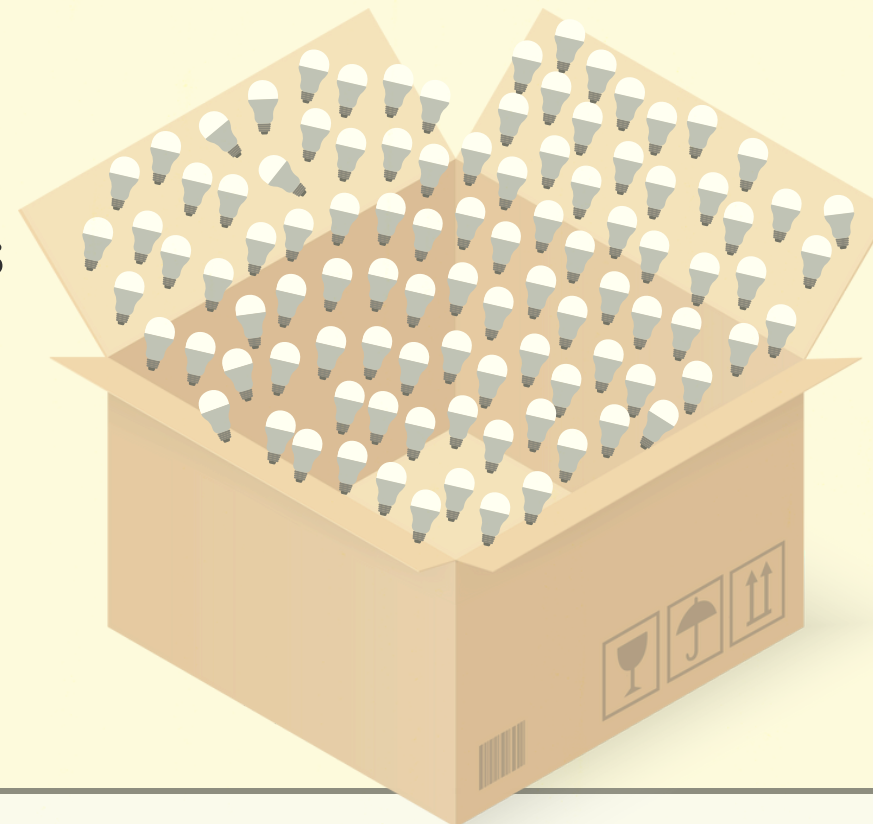
Equal amounts of light.



A 10W LED light bulb



1 kWh powers 17  
standard light bulbs  
for an hour.



1 kWh powers 100  
LED light bulbs for  
an hour.

# WHY DOES ENERGY EFFICIENCY MATTER?



**STUDENT ENERGY** Climate Change & Energy 101

Share

Climate change • Climate change refers to long-term shifts in temperatures and...

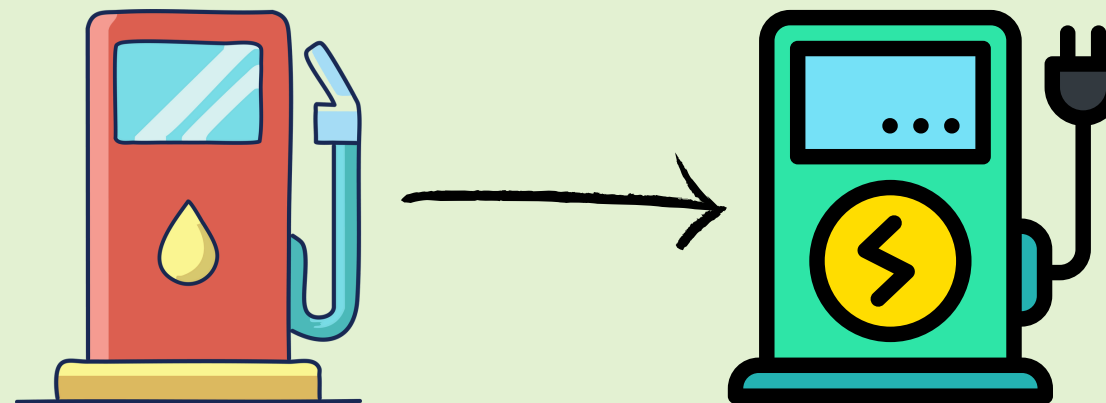
**STUDENT ENERGY**  
**CLIMATE CHANGE**  
**101**

Watch on  YouTube

The image is a YouTube video player thumbnail. It features a dark blue background with a subtle pattern of white dots, resembling a starry night sky. The main title 'CLIMATE CHANGE 101' is prominently displayed in large, bold, yellow-green letters, with '101' in white. Above this, the words 'STUDENT ENERGY' are written in a smaller, blue, sans-serif font. In the top left corner, there is a blue circular logo with the words 'STUDENT ENERGY' in white. To the right of the logo, the text 'Climate Change & Energy 101' is written in white. In the top right corner, there is a white share icon and the word 'Share' in white. Below the share icon, there is a black rectangular box with white text that reads 'Climate change • Climate change refers to long-term shifts in temperatures and...'. In the bottom left corner, there is a black rectangular box with white text that reads 'Watch on' followed by the YouTube logo and the word 'YouTube'.



# ENERGY VOCABULARY



## Energy Audit

An evaluation of a building which identifies opportunities for energy efficiency.

## Electrification

The process of powering something with electricity instead of gas/coal/oil.

## Energy Meter

A device that measures the amount of electrical energy consumed by a home.

# CONDUCT A DIY ENERGY AUDIT WITH PSE'S ONLINE TOOL (MUST BE LOGGED IN)

## Online energy assessment

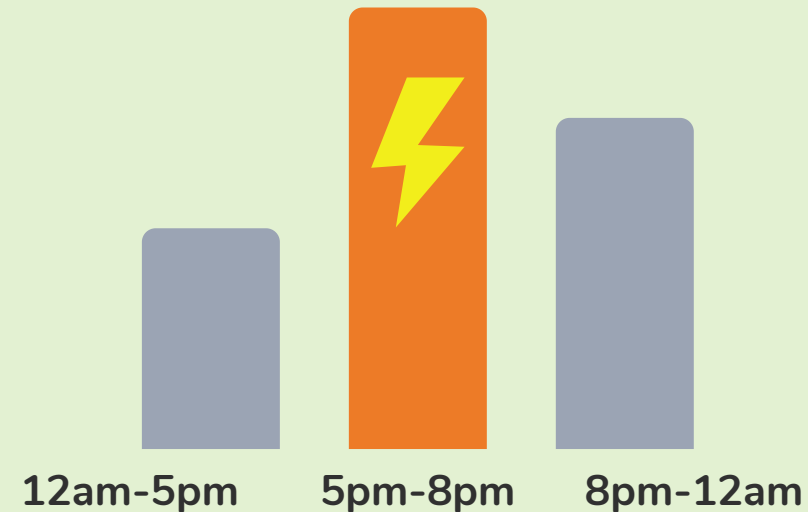
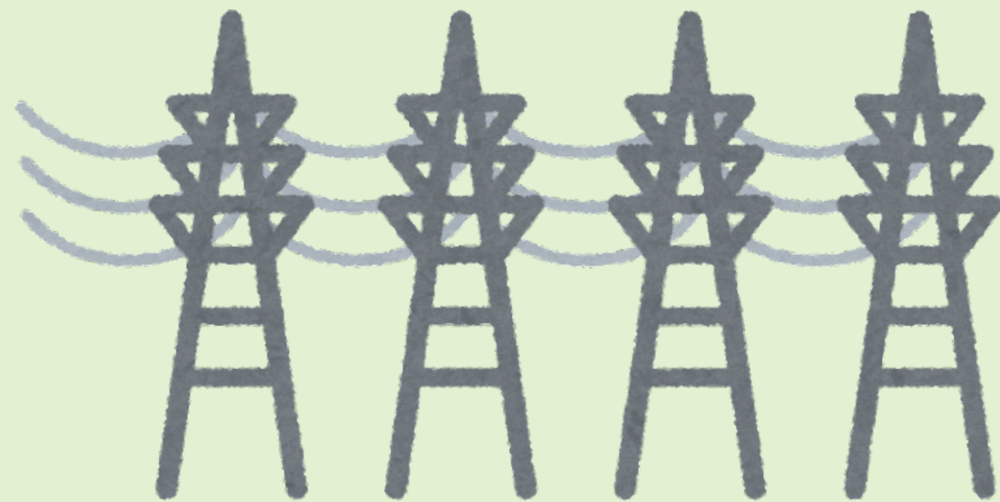
PSE offers a quick and convenient 3-step process to help you understand and control your home's energy usage.

1. Start by completing an [online assessment](#) to determine how energy is used in your home. This should take about 5 to 7 minutes to complete.
2. Next, review the relevant insights and suggested [ways to save](#) as a result of your online energy assessment.
3. Finally, measure and monitor the impact of changes you make on your overall energy usage by reviewing [usage graphs](#) within your myPSE account.

**[HTTPS://WWW.PSE.COM/EN/ACCOUNT-AND-BILLING/MY-USAGE/HOME-ENERGY-ANALYSIS](https://www.pse.com/en/account-and-billing/my-usage/home-energy-analysis)**



# ENERGY VOCABULARY



## Grid

Infrastructure that delivers electricity from power plants to homes and businesses.

## Peak Demand

The period when electricity consumption is at its highest (often early evening)

## Weatherization

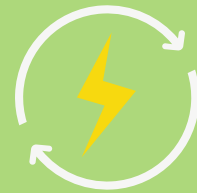
Making a building more resistant to the effects of weather (insulation, double-pane windows, sealing cracks, etc.)



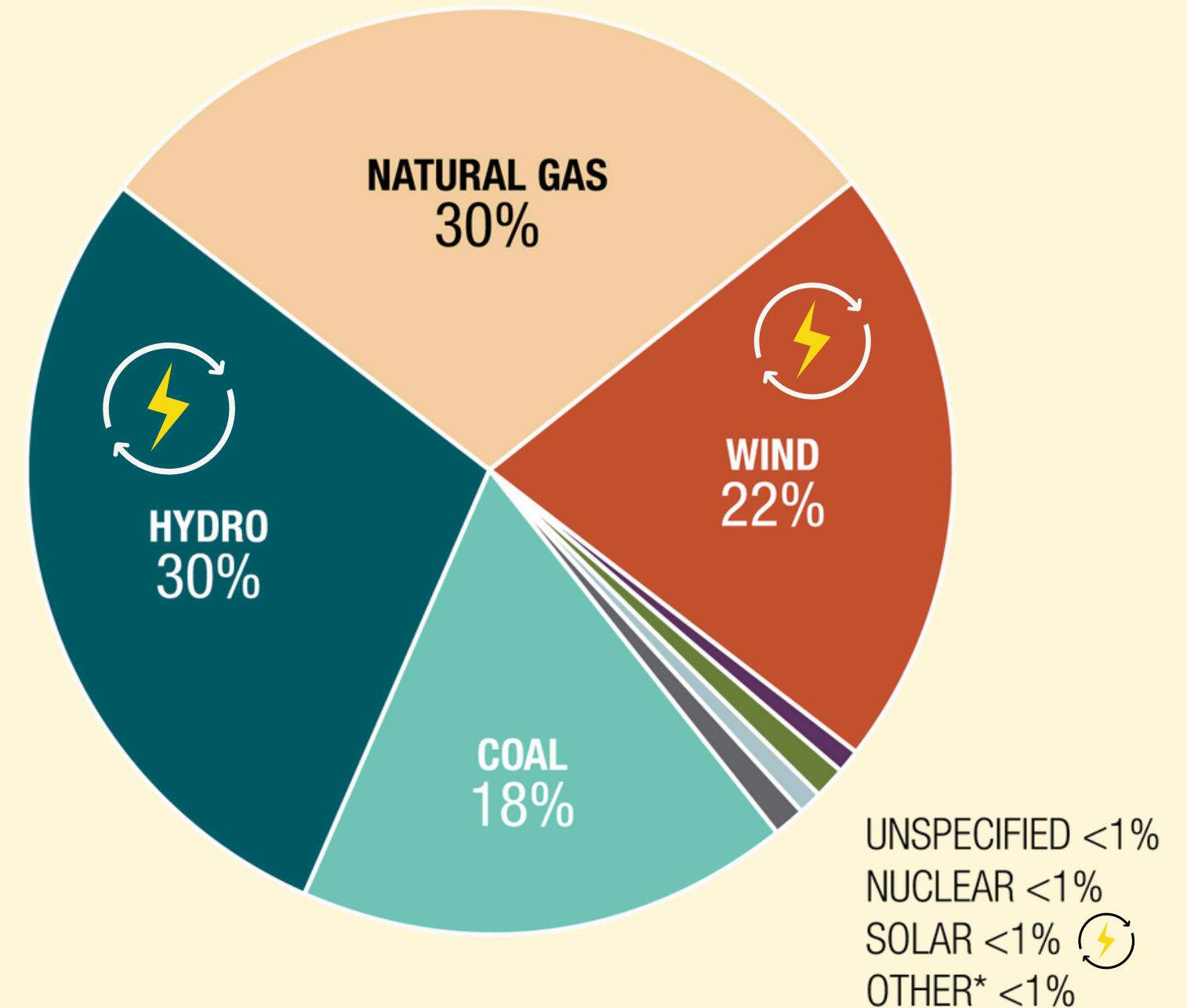
# PSE ENERGY MIX (2023)

Source: Puget Sound Energy

**Renewable Energy: replenishes naturally.**



Note: Data not yet available for 2024;  
PSE will eliminate coal by the end of  
2025 per WA State Law.



Graph shows the energy sources  
available on the grid.

# HOW TO READ YOUR PSE BILL

What are the  
different  
charges on my  
utility bill?



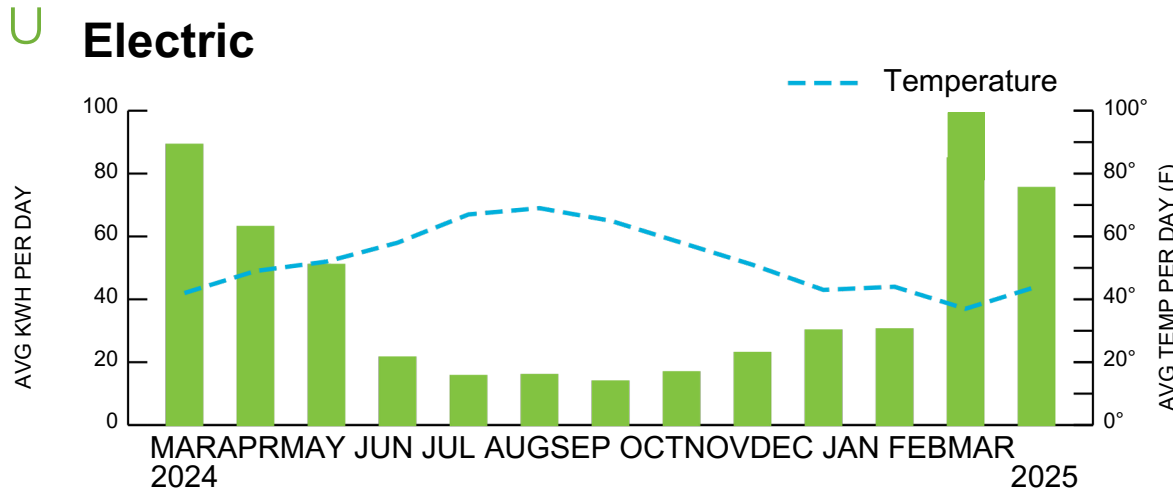


pse.com | E P F in H I

Issued: March 12, 2025  
**Account Number: 220012345678**  
**DUE DATE April 1, 2025**  
**TOTAL DUE \$365.69**

**PORT GAMBLE S'KLALLAM TRIBE**  
Serving: [Address]

Your Usage Information



	Last Year	This Year
Average daily kilowatt hours	89.17	75.42
Average daily cost	\$11.26	\$11.37
Days in billing cycle	30	31
Average temperature	42°F	44°F

Your Account Summary

Previous Charges:		
Amount of Your Last Bill (dated 2/10/2025)	\$	533.26
Payment received 2/28/2025 - Thank you!	\$	-533.26
Past Due Amount	\$	0.00
Current Charges	\$	365.69
Electric Charges	\$	365.69
Total Current Charges	Total\$	365.69

Total includes current and past due charges

Previous charges, if any, may be past due.

Late Payments | A late payment fee of 1% per month will apply to past due charges, if any, and amounts unpaid more than 10 business days after the statement due date. Amounts will be considered delinquent if payment is not received on or before the due date.

Get help with your energy bill

Depending on income and household size, you may be eligible for free weatherization assistance as well as payment assistance.  
[pse.com/assistance](https://pse.com/assistance).

How to reach us

For self-service options visit our website at [pse.com](https://pse.com).

Email: [customer@pse.com](mailto:customer@pse.com)

Customer Service: 1-888-225-5773 | TTY: 1-800-962-9498  
Hours: 7:30 a.m. – 6:30 p.m. M – F | TRS: 1-866-831-5161  
Puget Sound Energy: P.O. Box 91269, Bellevue, WA 98009

24 Hour Emergency and Outage line: 1-888-225-5773





**PUGET SOUND ENERGY**



J

G

H095



KINGSTON WA 98346-9700



7764 NE 288TH ST, Kingston

Bellevue, WA 98009-9269

Your bill includes charges for electricity and/or natural gas, delivery services, general administration and overhead, metering, taxes, conservation expenses and other items.

U Electric Detail Information: [Example Home]

Rate Schedule	Meter #	Start Date	End Date	Multiplier	Kilowatt Hours (kWh).	Electric Demand (kW).	Reactive Power(kVAR)	Meter Read Type
		Read	Read					
Residential 7	X12345678	2/8	3/11	1	2,261	—	—	Actual Read
		78047	80308					

Your Electric Charge Details (31 days)			Rate x Unit		=	Charge
2,261 kWh used for service 2/9/2025 - 3/11/2025						
Basic Charge			\$7.49	per month	\$	7.49
Electricity						
Tier 1 (First 600 kWh Used)			0.142712	600 kWh		85.63
Tier 2 (Above 600 kWh Used)			0.162129	1,661 kWh		269.30
Electric Cons. Program Charge			0.006095	2,261 kWh		13.78
Power Cost Adjustment			0.002883	2,261 kWh		6.52
Energy Exchange Credit Other			-0.007534	2,261 kWh		-17.03
Electric Charges & Credits			0.000000	2,261 kWh		0.00
Subtotal of Electric Charges						365.69
Taxes						
State Utility Tax (\$14.16 included in above charges)			3.873%			
Current Electric Charges						\$ 365.69

Definitions

**Basic Charge** — Covers the costs for meters, meter reading, billing and other costs that do not vary with energy use or the number of days covered by the bill.

**Multiplier** — Converts the amount of electricity used as measured by your meter into kWh.

**kWh** — Your use of electricity is billed in units called kilowatt hours. It is a unit of energy that equals 1,000 watts of electricity consumed in one hour.

**Energy Exchange Credit** — Federal Columbia River Benefits supplied by Bonneville Power Administration from low-cost power generated by federal hydroelectric dams.

**Other Electric Charges and Credits** — Includes the Merger, Federal Wind Power, and Renewable Energy Credits.

If you live on reservation,  
we have a guide for removing this tax!

## **What is the Energy Exchange Credit?**

Residential and farm customers of Pacific Northwest investor-owned utilities like Puget Sound Energy receive a pass-through federal credit--the Energy Exchange Credit--that reduces your bill.

In other words, customers are receiving a credit because PSE is saving money by purchasing power directly from a federal agency. Specifically from the Bonneville Power Administration, which generates hydropower from dams on the Columbia River.

You will likely see this credit on your bill.  
It means you pay less!





# PSE FLEX Rewards

Available **NOW**.

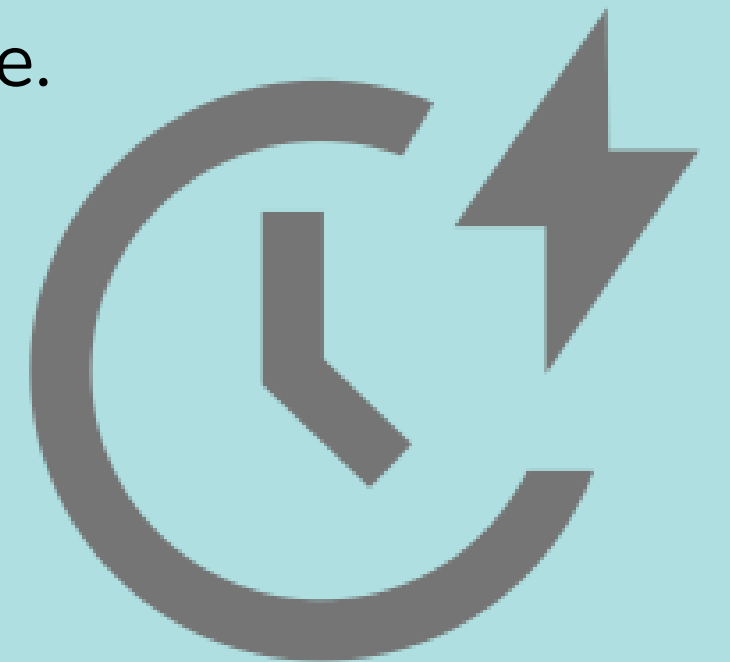
Flex Rewards is a voluntary program that incentivizes customers to take simple steps to conserve during Flex events - days when electricity usage is forecasted to peak. When demand is high, individual actions such as turning off large appliances can collectively make a **big impact** in balancing the electrical load.

During Flex events, PSE will send you notifications to reduce your energy usage.

You'll earn money based on how much electricity you save.

- Get \$25 for enrolling
- Plus \$1 per kWh you save during Flex events
- \$15 each year you stay enrolled

Flex events will only occur during the hours of 7 a.m. to 10 p.m., typically lasting between 2-4 hours each, and will never take place on holidays. Participation in Flex events is entirely voluntary and there is *no penalty* if you choose not to participate.



# ENERGY EFFICIENCY AND CONSERVATION CHANGES

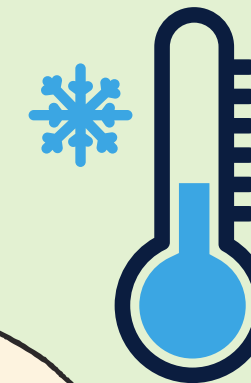
How can I  
lower my  
energy bill?



# NO COST ENERGY SAVINGS



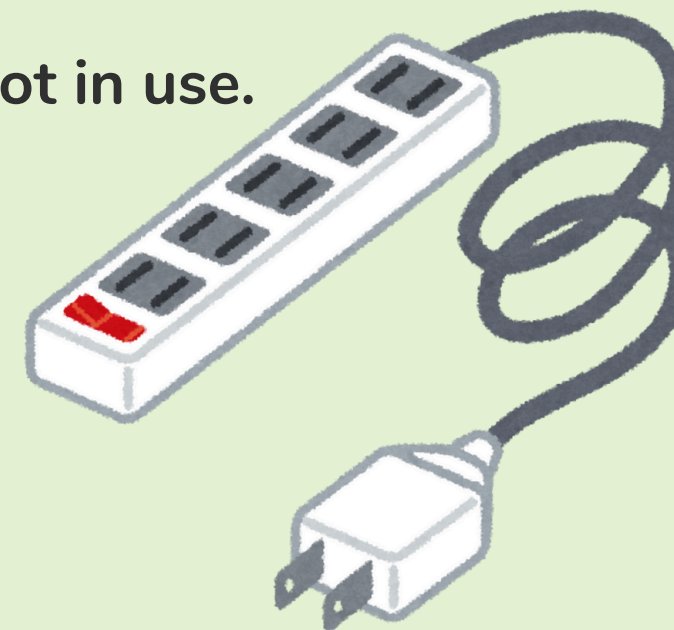
- Turn off lights when you exit a room.
- Program your thermostat to be lower when you're asleep or away.
- Use less hot water (showers, dishes, laundry, etc.) and/or lower maximum water temperature.
- Open blinds in winter and close blinds in summer.
- Use microwave/toaster/air fryer for smaller portions instead of oven.
- Close windows/doors to keep heat in.
- Line-dry clothing when weather is nice.



# LOW COST ENERGY UPGRADES



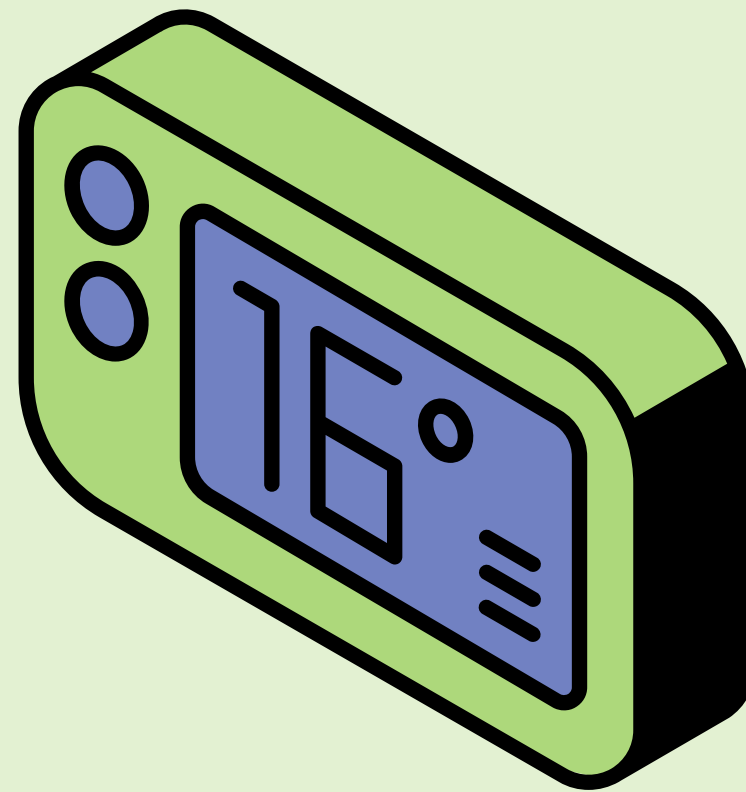
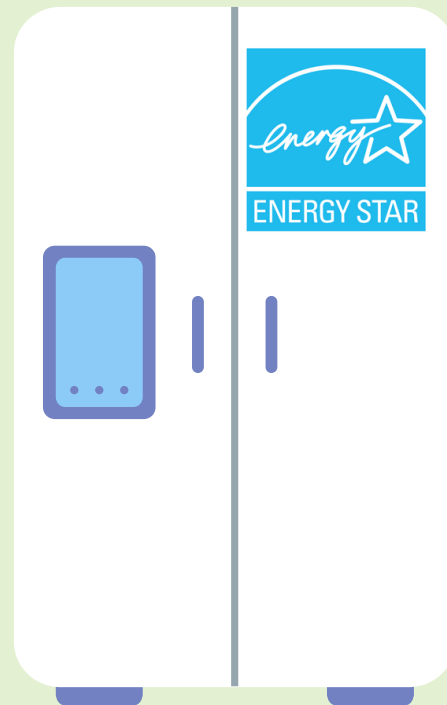
- Replace HVAC (Heating, Ventilation, Air Conditioning) filter regularly.
- Switch to LED light bulbs.
- Install water efficient/WaterSense showerhead.
- Add weather stripping/door sweeps to keep heated(or cooled) air in.
- Use smart power strips to turn off appliances not in use.
- Add insulating blanket to water heater.



## MID COST ENERGY UPGRADES



- Choose Energy Star when replacing appliances (Puget Sound Energy rebates available)
- Install smart thermostat to automatically adjust heating/cooling.
- Replace single-pane windows (or compromised double-pane windows) with new double-pane (also known as double-glazed).

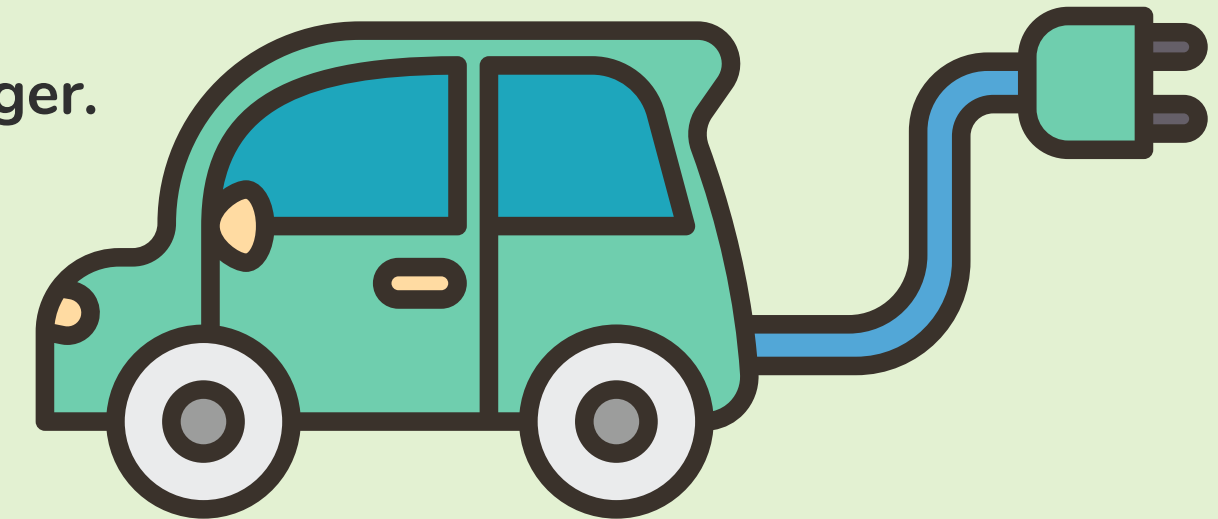
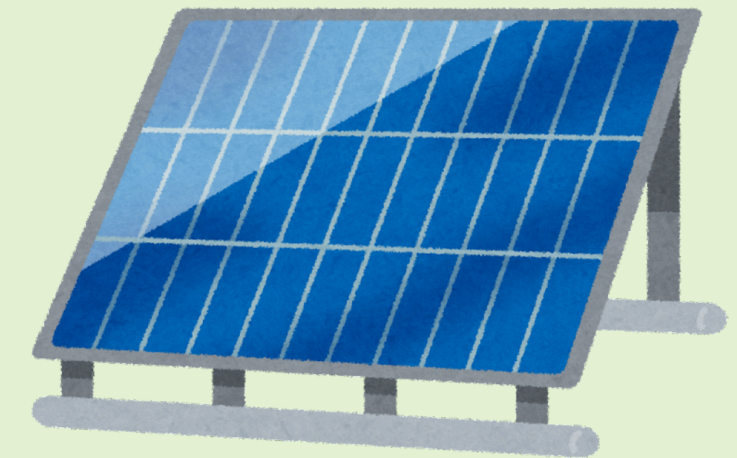




# ENERGY UPGRADE INVESTMENTS

\$\$\$

- Install heat pump hot water heater and heat pump heating/cooling system.
- Opt for ductless HVAC over ducted aka minisplits.
- Improve home insulation (attic, floor/crawlspace).
- Switch to an electric vehicle and install electric vehicle charger.
- Install a solar array on your roof.



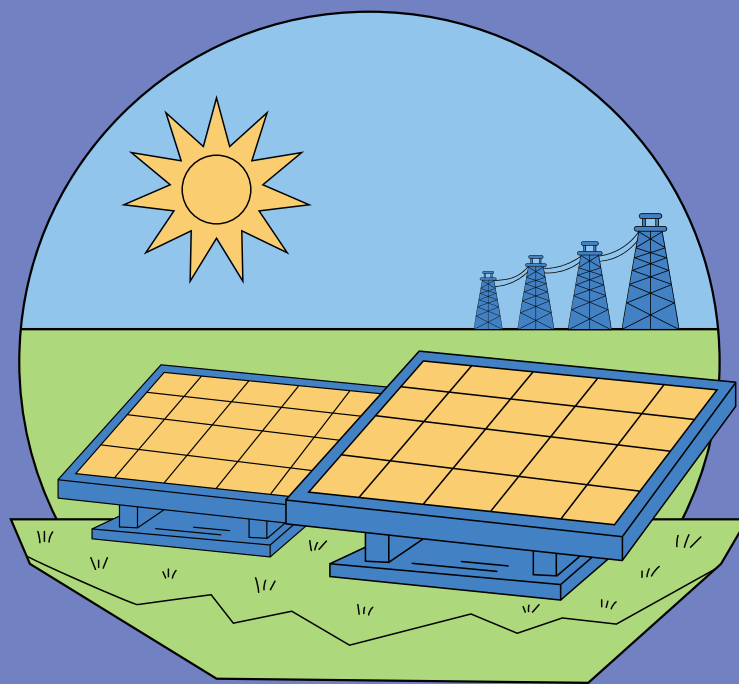
**Rebates and tax credits available for many upgrades!**  
**Investments can be cheaper in the long run.**

# RESOURCES FOR SAVINGS

There are a wide variety of rebates and discounts available!

Not sure where to start? Use PSE's Free Tool!  
<https://www.pse.com/en/rebates/home-energy-assessment>

<https://pgst.nsn.us/energy>



Rebates:  
<https://www.pse.com/en/rebates>

Income-Eligible:  
<https://www.pse.com/en/account-and-billing/assistance-programs>



# QUESTIONS?

How can I learn  
more about the  
Tribe's energy  
plans?



**Contact: Rachel Gates**

Energy Program Manager

*Thanks for  
coming!*



rhgates@pgst.nsn.us  
(360) 297-6211