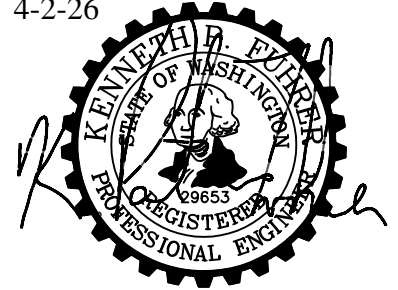


BID ADDENDUM NO. 1

4-2-26

Project Name: Raccoon Town
Owner: Port Gamble S'Klallam Tribe
Engineer of Record: Pat Fuhrer, P.E. – MAP Ltd



NOTE: THIS DOCUMENT IS INSCRIBED
WITH A DIGITIZED SIGNATURE BY THE
ENGINEER AS PROVIDED BY WAC
196-23-070(2)

Addendum Date: April 2, 2026
Bid Due Date Unchanged: 12:00 pm April 15, 2026

NOTICE TO ALL BIDDERS

This Bid Addendum forms a part of the Contract Documents and shall be acknowledged on the Bid Form. Failure to acknowledge this Addendum may result in rejection of the bid.

All bidders shall carefully review the information contained herein and incorporate all revisions, clarifications, and additions into their bid preparation.


SUMMARY OF CHANGES

This Addendum includes the following:

- Clarifications to Bid Documents
- Revisions to Plans
- Revisions to Specifications
- Responses to Bidder Questions Received to date
- Additions or Deletions to Scope of Work
- Updated Bid Date and Time

1. REVISIONS TO PLANS

Please insert the attached revised plan sheets C-10.01, C-10.04, C-10.05, C-10.06, and C-10.07 dated 4-1-26 and sealed 4-2-26 into the bid set plans. These sheets were updated to include the Owner's request at the pre-construction meeting to **ADD** a second conduit and handholds to the street light trench for the Owner to install a fiber line. Also, a note was **ADDED** to clarify that the intent that the Contractor is responsible for re-energizing the Owner's street lights in Hood Canal Drive after undergrounding the conduit and pulling the new street light wire.

The additions to the plan sheets are represented by the following symbol accordingly: 

2. REVISIONS TO SPECIFICATIONS

No change

4. RESPONSES TO BIDDER QUESTIONS

The following questions from bidders have been received to date and responses followed in **bold font**:

Section 4.1 of the specifications indicates that survey and compaction testing will be provided by the Tribe. Can you confirm? **Correct, the Owner has contracted separately for this work to be completed and coordinated/scheduled in common between the Tribe and Contractor during construction.**

Can you confirm the location of the designated site area for the 25% volume of timber that is to be salvaged and given to the Tribe upon completion of the site clearing? **Attached please find an aerial photo of the Log laydown area, the driveway access lies on the east side of Little Boston Road just south of the Skate Park approximately 3/4-mile south of the Hood Canal Drive/Little Boston intersection.**

Can you confirm the depth of the aggregate required for the Pond Access Road? **The pond access roads and the gravel pedestrian path on the south side of Hood Canal Drive are to have a 6" compacted depth Crushed Surfacing Top Course.**

Is the pond chain link fencing and gates to be black vinyl coated or standard galvanized? **The pond chain link fencing is to be black vinyl coated.**

Can you confirm if PSE will be providing all conduit, vaults, and handholds related to the site power and street lighting infrastructure? Can you also confirm if the power conduit is to be installed by the contractor or installed by PSE? **PSE is providing all site power and street lighting infrastructure, the Contractor is responsible for trenching and backfill. Contractor is responsible for all the Tribe's fiber conduit trenching and handholds both on-site and in-common with the street light trench along Hood Canal Drive.**

6. ADDITIONS OR DELETIONS TO SCOPE OF WORK

Second 2" conduit addition and 3 handholds in trench along south side of Hood Canal Drive and 6" CSTC compacted depth for pond access roads and the pedestrian trail along the south side of Hood Canal Drive.

7. BID DATE AND TIME

No change

8. ACKNOWLEDGEMENT

This Addendum shall be acknowledged on the Bid Form by the Contractor.

ISSUED BY

Engineer: Pat Fuhrer, P.E.

Firm Name: MAP Ltd.

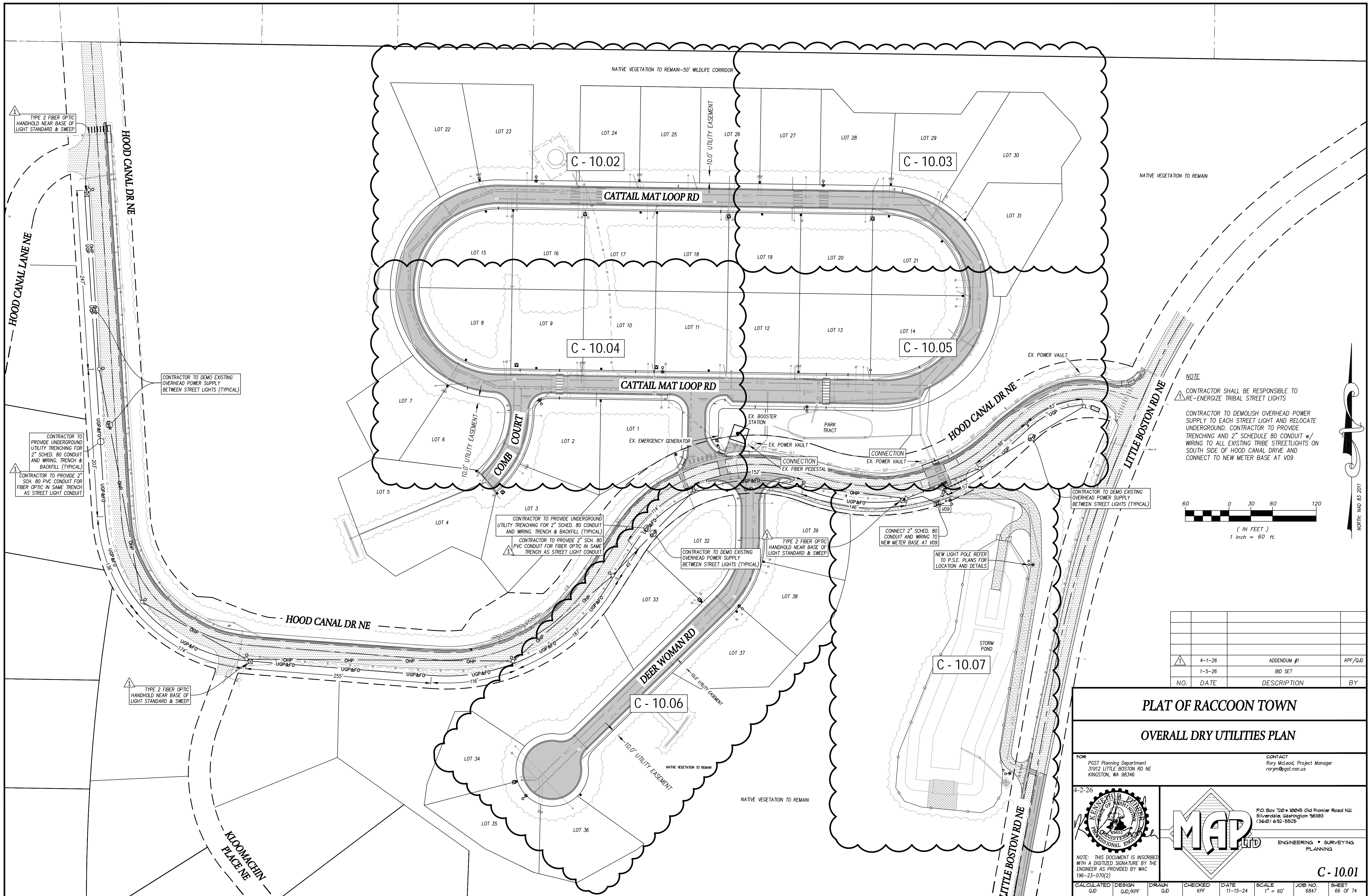
Contact Person: Pat Fuhrer

Phone: 360-692-5525 x-116

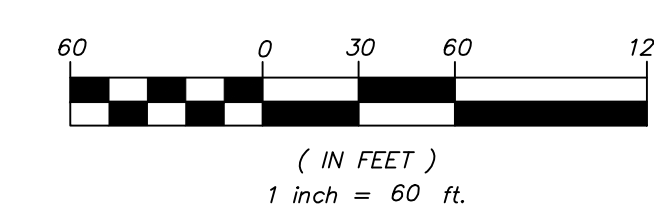
Email: patf@map-limited.com

Authorized Signature:

Date: 4-2-26



NOTE
 CONTRACTOR SHALL BE RESPONSIBLE TO RE-ENERGIZE TRIBAL STREET LIGHTS
 CONTRACTOR TO DEMOLISH OVERHEAD POWER SUPPLY TO EACH STREET LIGHT AND RELOCATE UNDERGROUND. CONTRACTOR TO PROVIDE TRENCHING AND 2" SCHEDULE 80 CONDUIT w/ WIRING TO ALL EXISTING TRIBE STREETLIGHTS ON SOUTH SIDE OF HOOD CANAL DRIVE AND CONNECT TO NEW METER BASE AT V09



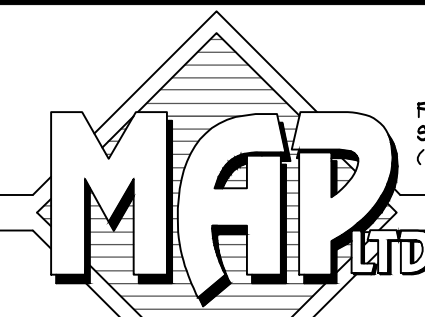
| NO. | DATE | DESCRIPTION | BY |
|--------|------|-------------|---------|
| 4-1-26 | | ADDENDUM #1 | KPF/QJD |
| 1-5-26 | | BID SET | |
| | | DESCRIPTION | BY |

PLAT OF RACCOON TOWN

OVERALL DRY UTILITIES PLAN

FOR: POST Planning Department
 31912 LITTLE BOSTON RD NE
 KINGSTON, WA 98346

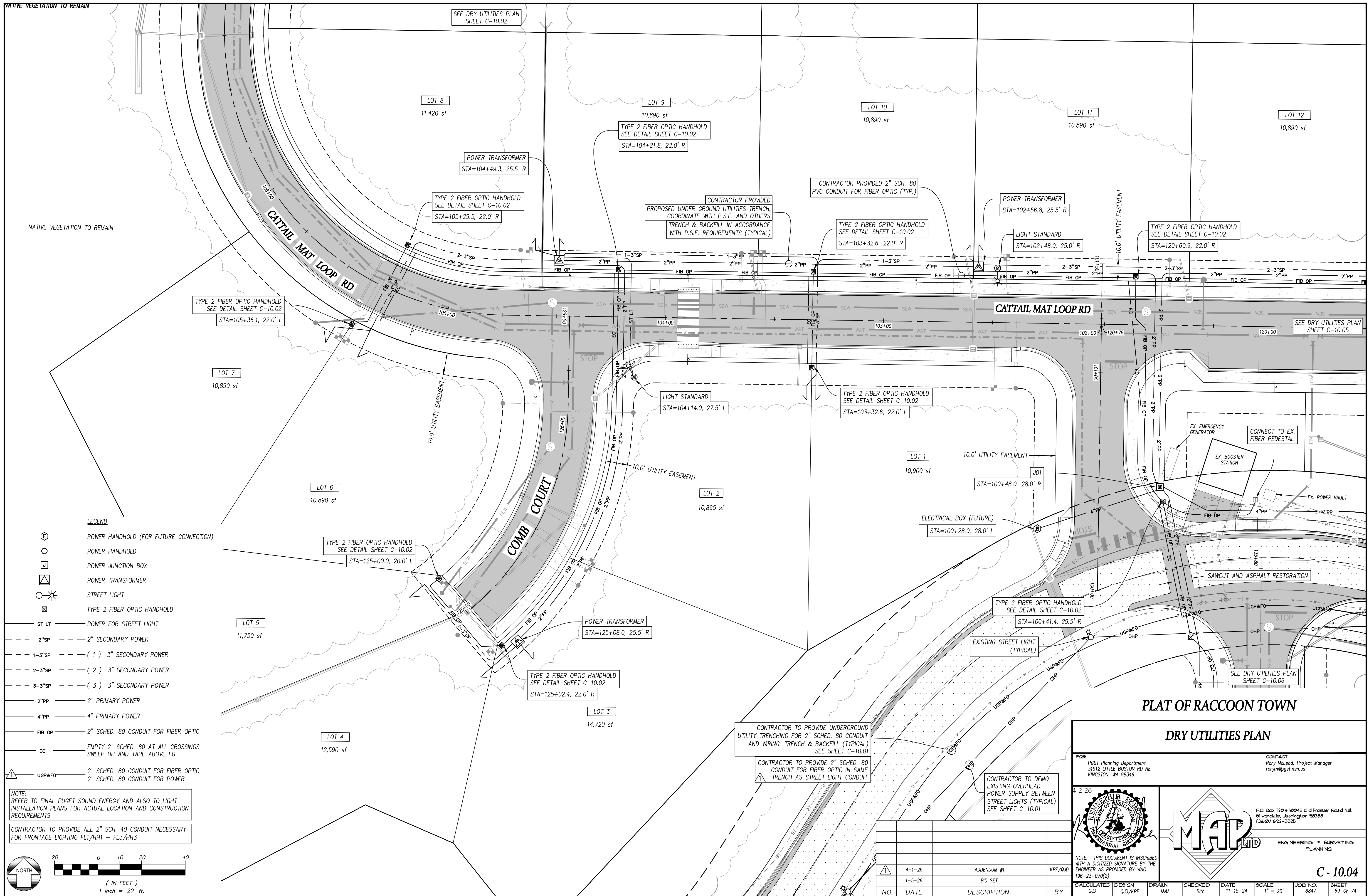
CONTACT
 Rory McLeod, Project Manager
 rorym@post.nsn.us

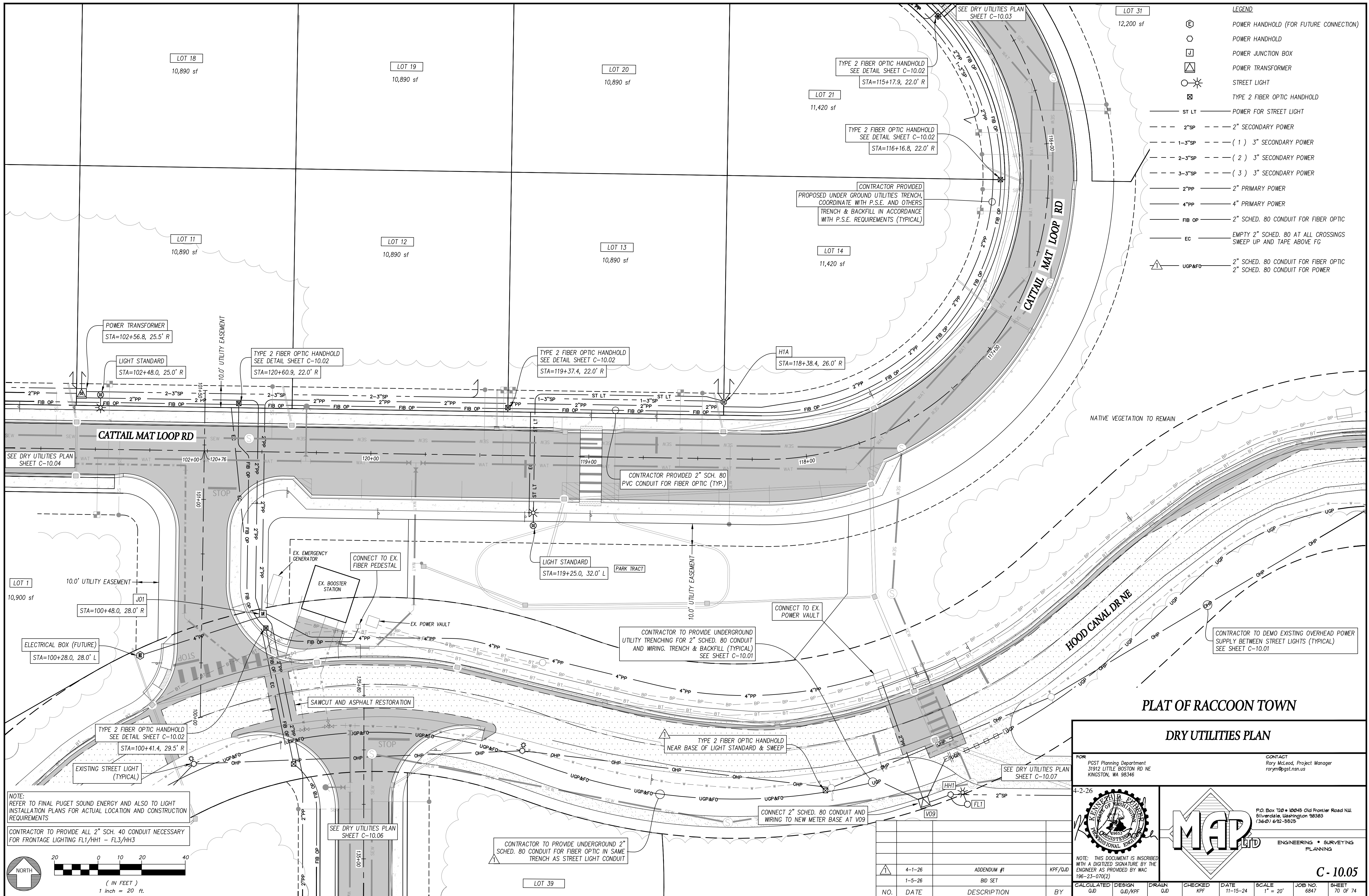


NOTE: THIS DOCUMENT IS INSCRIBED WITH A DIGITIZED SIGNATURE BY THE ENGINEER AS PROVIDED BY WAC 196-23-070(2)

C-10.01

| CALCULATED | DESIGN | DRAWN | CHECKED | DATE | SCALE | JOB NO. | SHEET |
|------------|---------|-------|---------|----------|----------|---------|----------|
| QJD | QJD/KPF | QJD | KPF | 11-15-24 | 1" = 60' | 6847 | 68 OF 74 |





- LEGEND**
- ⊕ POWER HANDHOLD (FOR FUTURE CONNECTION)
 - POWER HANDHOLD
 - ⊞ POWER JUNCTION BOX
 - ⊠ POWER TRANSFORMER
 - ⊙ STREET LIGHT
 - ⊞ TYPE 2 FIBER OPTIC HANDHOLD
 - ST LT — POWER FOR STREET LIGHT
 - 2"SP --- 2" SECONDARY POWER
 - 1-3"SP --- (1) 3" SECONDARY POWER
 - 2-3"SP --- (2) 3" SECONDARY POWER
 - 3-3"SP --- (3) 3" SECONDARY POWER
 - 2"PP — 2" PRIMARY POWER
 - 4"PP — 4" PRIMARY POWER
 - FIB OP — 2" SCHED. 80 CONDUIT FOR FIBER OPTIC
 - EC — EMPTY 2" SCHED. 80 AT ALL CROSSINGS SWEEP UP AND TAPE ABOVE FG
 - ⚠ UGP&FO — 2" SCHED. 80 CONDUIT FOR FIBER OPTIC
2" SCHED. 80 CONDUIT FOR POWER

NOTE:
REFER TO FINAL PUGET SOUND ENERGY AND ALSO TO LIGHT
INSTALLATION PLANS FOR ACTUAL LOCATION AND CONSTRUCTION
REQUIREMENTS

CONTRACTOR TO PROVIDE ALL 2" SCH. 40 CONDUIT NECESSARY
FOR FRONTAGE LIGHTING FL1/HH1 - FL3/HH3

CONTRACTOR TO PROVIDE UNDERGROUND 2" SCHED. 80 CONDUIT FOR FIBER OPTIC IN SAME TRENCH AS STREET LIGHT CONDUIT

PLAT OF RACCOON TOWN

DRY UTILITIES PLAN

FOR: POST Planning Department
31912 LITTLE BOSTON RD NE
KINGSTON, WA 98346

CONTACT:
Rory McLeod, Project Manager
rorym@post.nsn.us

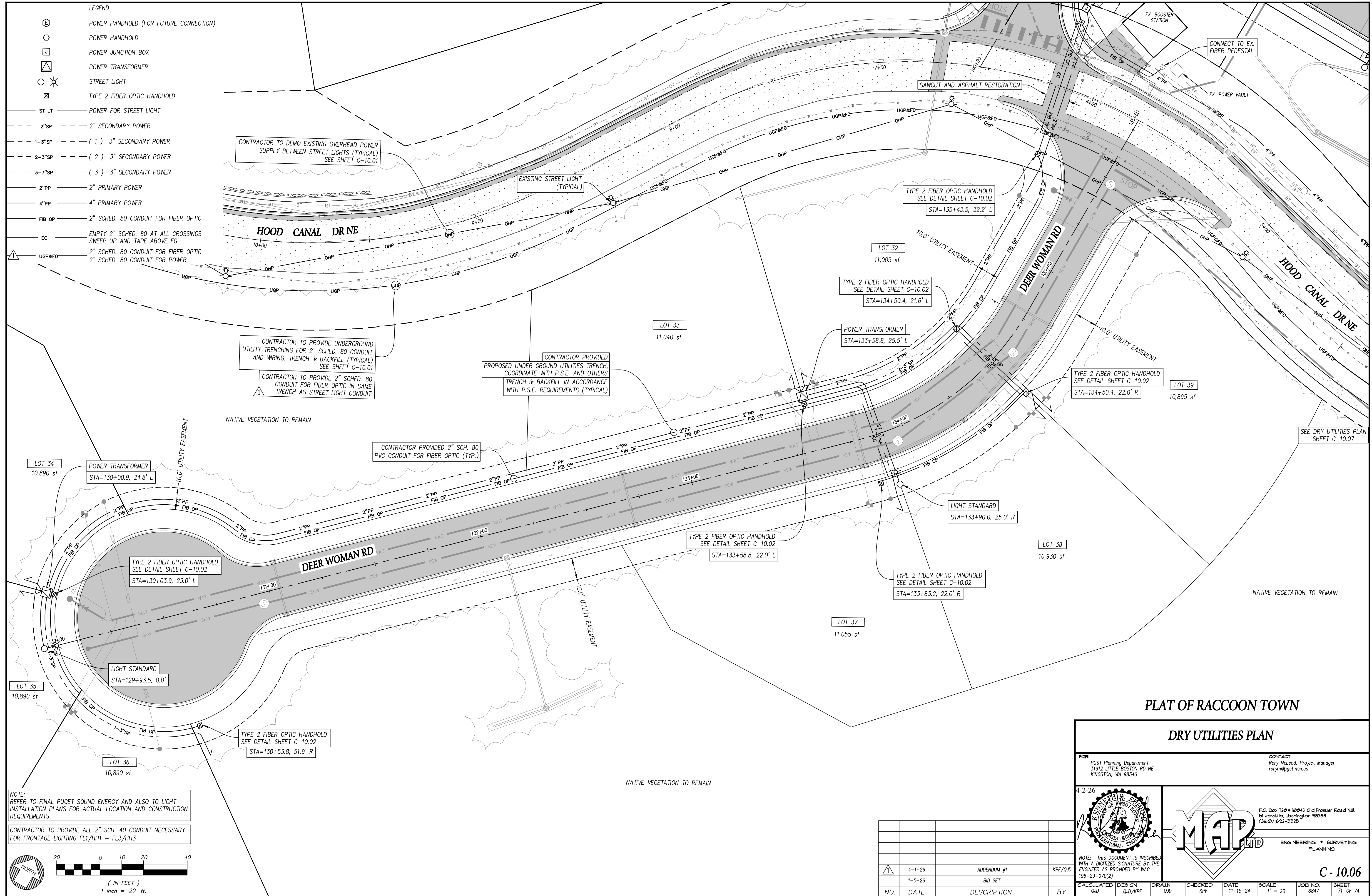
4-2-26

NOTE: THIS DOCUMENT IS INSCRIBED
WITH A DIGITIZED SIGNATURE BY THE
ENGINEER AS PROVIDED BY WAC
196-23-070(2)

C-10.05

| NO. | DATE | DESCRIPTION | BY |
|--------|------|-------------|---------|
| 4-1-26 | | ADDENDUM #1 | KPF/QJD |
| 1-5-26 | | BID SET | |

| CALCULATED | DESIGN | DRAWN | CHECKED | DATE | SCALE | JOB NO. | SHEET |
|------------|---------|-------|---------|----------|----------|---------|----------|
| QJD | QJD/KPF | QJD | KPF | 11-15-24 | 1" = 20' | 6847 | 70 OF 74 |

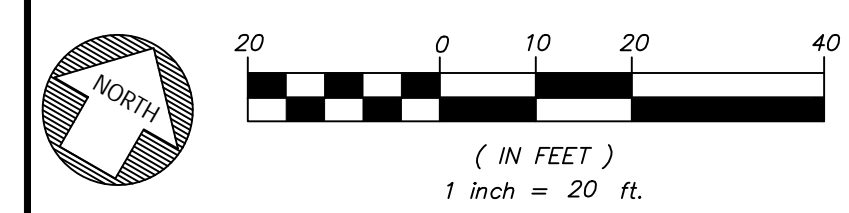


LEGEND

- POWER HANDHOLD (FOR FUTURE CONNECTION)
- POWER HANDHOLD
- POWER JUNCTION BOX
- POWER TRANSFORMER
- STREET LIGHT
- TYPE 2 FIBER OPTIC HANDHOLD
- ST LT — POWER FOR STREET LIGHT
- 2"SP — 2" SECONDARY POWER
- 1-3"SP — (1) 3" SECONDARY POWER
- 2-3"SP — (2) 3" SECONDARY POWER
- 3-3"SP — (3) 3" SECONDARY POWER
- 2"PP — 2" PRIMARY POWER
- 4"PP — 4" PRIMARY POWER
- FIB OP — 2" SCHED. 80 CONDUIT FOR FIBER OPTIC
- EC — EMPTY 2" SCHED. 80 AT ALL CROSSINGS SWEEP UP AND TAPE ABOVE FG
- UGP&FO — 2" SCHED. 80 CONDUIT FOR FIBER OPTIC
2" SCHED. 80 CONDUIT FOR POWER

NOTE:
REFER TO FINAL PUGET SOUND ENERGY AND ALSO TO LIGHT
INSTALLATION PLANS FOR ACTUAL LOCATION AND CONSTRUCTION
REQUIREMENTS

CONTRACTOR TO PROVIDE ALL 2" SCH. 40 CONDUIT NECESSARY
FOR FRONTAGE LIGHTING FL1/HH1 - FL3/HH3



PLAT OF RACCOON TOWN

DRY UTILITIES PLAN

FOR
PST Planning Department
31912 LITTLE BOSTON RD NE
KINGSTON, WA 98346

CONTACT
Rory McLeod, Project Manager
rorym@pst.tn.us



P.O. Box 120 • 10045 Old Frontier Road NW
Silverdale, Washington 98383
(360) 692-9525

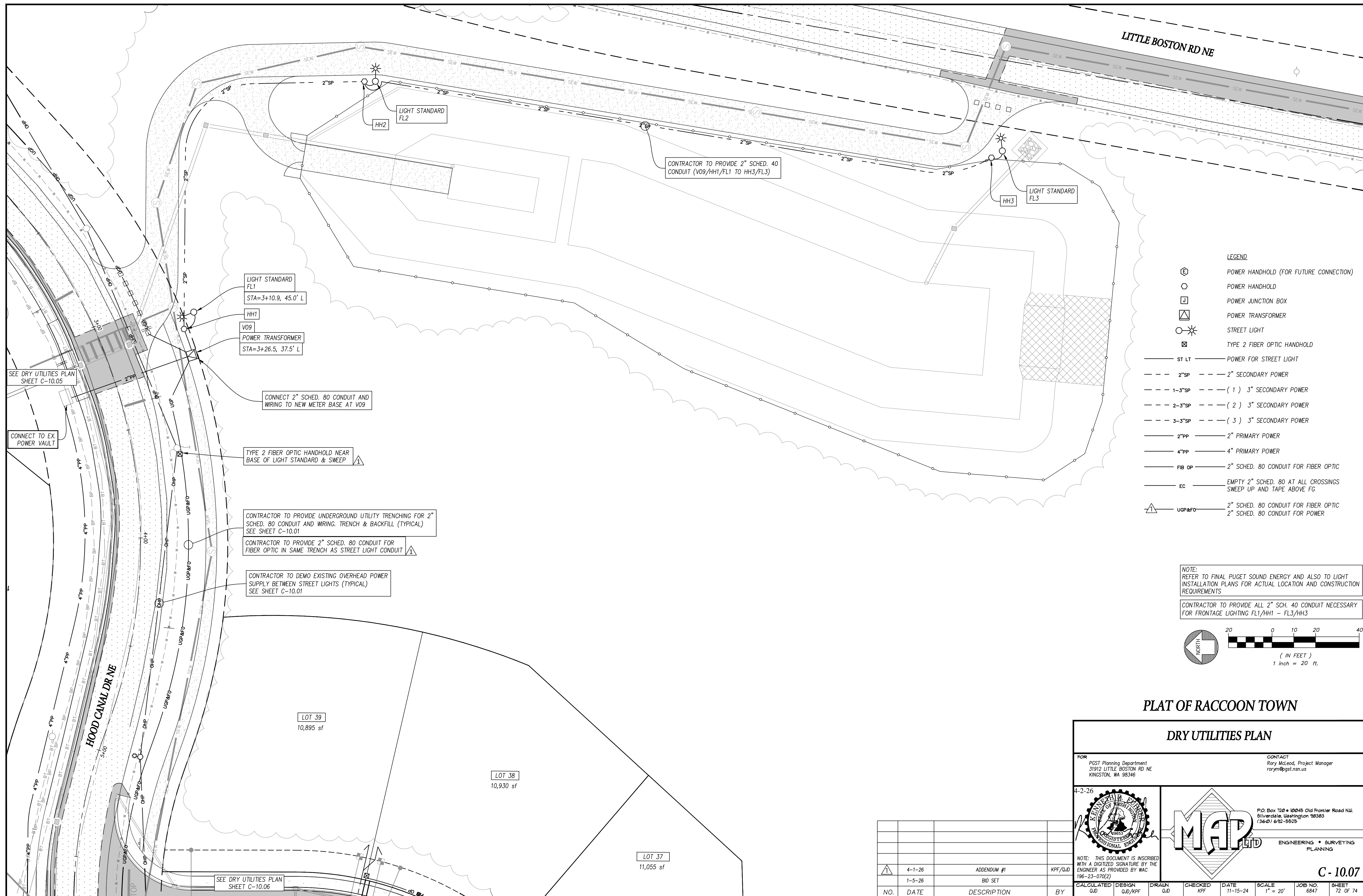
ENGINEERING • SURVEYING
PLANNING

C - 10.06

| NO. | DATE | DESCRIPTION | BY |
|--------|------|-------------|---------|
| 4-1-26 | | ADDENDUM #1 | KPF/QJD |
| 1-5-26 | | BID SET | |
| | | | |
| | | | |
| | | | |

| CALCULATED | DESIGN | DRAWN | CHECKED | DATE | SCALE | JOB NO. | SHEET |
|------------|---------|-------|---------|----------|----------|---------|----------|
| QJD | QJD/KPF | QJD | KPF | 11-15-24 | 1" = 20' | 6847 | 71 OF 74 |

NOTE: THIS DOCUMENT IS INSCRIBED
WITH A DIGITIZED SIGNATURE BY THE
ENGINEER AS PROVIDED BY WAC
196-23-070(2)



LITTLE BOSTON RD NE

HOOD CANAL DR NE

LIGHT STANDARD FL1
STA=3+10.9, 45.0' L

HH1
V09
POWER TRANSFORMER
STA=3+26.5, 37.5' L

LIGHT STANDARD FL2

CONTRACTOR TO PROVIDE 2" SCHED. 40 CONDUIT (V09/HH1/FL1 TO HH3/FL3)

LIGHT STANDARD FL3

CONNECT 2" SCHED. 80 CONDUIT AND WIRING TO NEW METER BASE AT V09

TYPE 2 FIBER OPTIC HANDHOLD NEAR BASE OF LIGHT STANDARD & SWEEP

CONTRACTOR TO PROVIDE UNDERGROUND UTILITY TRENCHING FOR 2" SCHED. 80 CONDUIT AND WIRING. TRENCH & BACKFILL (TYPICAL) SEE SHEET C-10.01

CONTRACTOR TO PROVIDE 2" SCHED. 80 CONDUIT FOR FIBER OPTIC IN SAME TRENCH AS STREET LIGHT CONDUIT

CONTRACTOR TO DEMO EXISTING OVERHEAD POWER SUPPLY BETWEEN STREET LIGHTS (TYPICAL) SEE SHEET C-10.01

SEE DRY UTILITIES PLAN SHEET C-10.05

CONNECT TO EX. POWER VAULT

LOT 39
10,895 sf

LOT 38
10,930 sf

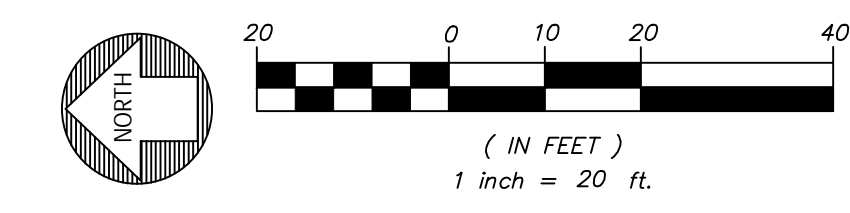
LOT 37
11,055 sf

SEE DRY UTILITIES PLAN SHEET C-10.06

- LEGEND**
- ⊕ POWER HANDHOLD (FOR FUTURE CONNECTION)
 - POWER HANDHOLD
 - POWER JUNCTION BOX
 - ⊠ POWER TRANSFORMER
 - ⊙* STREET LIGHT
 - ⊠ TYPE 2 FIBER OPTIC HANDHOLD
 - ST LT — POWER FOR STREET LIGHT
 - 2"SP --- 2" SECONDARY POWER
 - 1-3"SP --- (1) 3" SECONDARY POWER
 - 2-3"SP --- (2) 3" SECONDARY POWER
 - 3-3"SP --- (3) 3" SECONDARY POWER
 - 2"PP --- 2" PRIMARY POWER
 - 4"PP --- 4" PRIMARY POWER
 - FIB OP --- 2" SCHED. 80 CONDUIT FOR FIBER OPTIC
 - EC --- EMPTY 2" SCHED. 80 AT ALL CROSSINGS SWEEP UP AND TAPE ABOVE FG
 - ⊠ UGP&FO --- 2" SCHED. 80 CONDUIT FOR FIBER OPTIC
2" SCHED. 80 CONDUIT FOR POWER

NOTE:
REFER TO FINAL PUGET SOUND ENERGY AND ALSO TO LIGHT INSTALLATION PLANS FOR ACTUAL LOCATION AND CONSTRUCTION REQUIREMENTS

CONTRACTOR TO PROVIDE ALL 2" SCH. 40 CONDUIT NECESSARY FOR FRONTAGE LIGHTING FL1/HH1 - FL3/HH3



PLAT OF RACCOON TOWN

DRY UTILITIES PLAN

FOR
PST Planning Department
31912 LITTLE BOSTON RD NE
KINGSTON, WA 98346

CONTACT
Rory McLeod, Project Manager
rorym@pst.nsn.us



P.O. Box 120 • 10045 Old Frontier Road NW
Silverdale, Washington 98383
(360) 692-5525

ENGINEERING • SURVEYING
PLANNING

C-10.07

| NO. | DATE | DESCRIPTION | BY |
|-----|--------|-------------|---------|
| ⊠ | 4-1-26 | ADDENDUM #1 | KPF/QJD |
| | 1-5-26 | BID SET | |

NOTE: THIS DOCUMENT IS INSCRIBED WITH A DIGITIZED SIGNATURE BY THE ENGINEER AS PROVIDED BY WAC 196-23-070(2)

| CALCULATED | DESIGN | DRAWN | CHECKED | DATE | SCALE | JOB NO. | SHEET |
|------------|---------|-------|---------|----------|----------|---------|----------|
| QJD | QJD/KPF | QJD | KPF | 11-15-24 | 1" = 20' | 6847 | 72 OF 74 |

Search

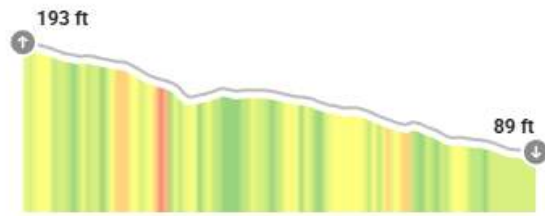


Line 04/02/26 10:05

04/02/26, 10:05 AM

Hide on map

Elevation



Distance

↔ 644 yds

Elevation Gain

↗ 0 ft

Elevation Loss

↘ 104 ft



Share



Edit



Add to Folder



See More

