

SEE SHEET 3

SEE SHEET 4

PORTLAND CO.  
SEC. 28-29-2E

**RECORD OF SURVEY  
AND DIVISION MAP  
OF HANSVILLE NORTH  
LOCATED IN A PORTION OF  
SECTIONS 20, 28, 29, 32 AND 33  
T. 28 N., R. 2 E., W.M.,  
KITSAP COUNTY, WASHINGTON  
SHEET 5 OF 7**

ORIGINAL TAX PARCEL NUMBERS

282802-2-002-2003, 282802-1-001-2006, 282802-1-002-2005,  
282802-4-001-2000, 322802-1-025-2003, 332802-1-003-2008,  
282802-1-002-2006 & 282802-1-001-2007

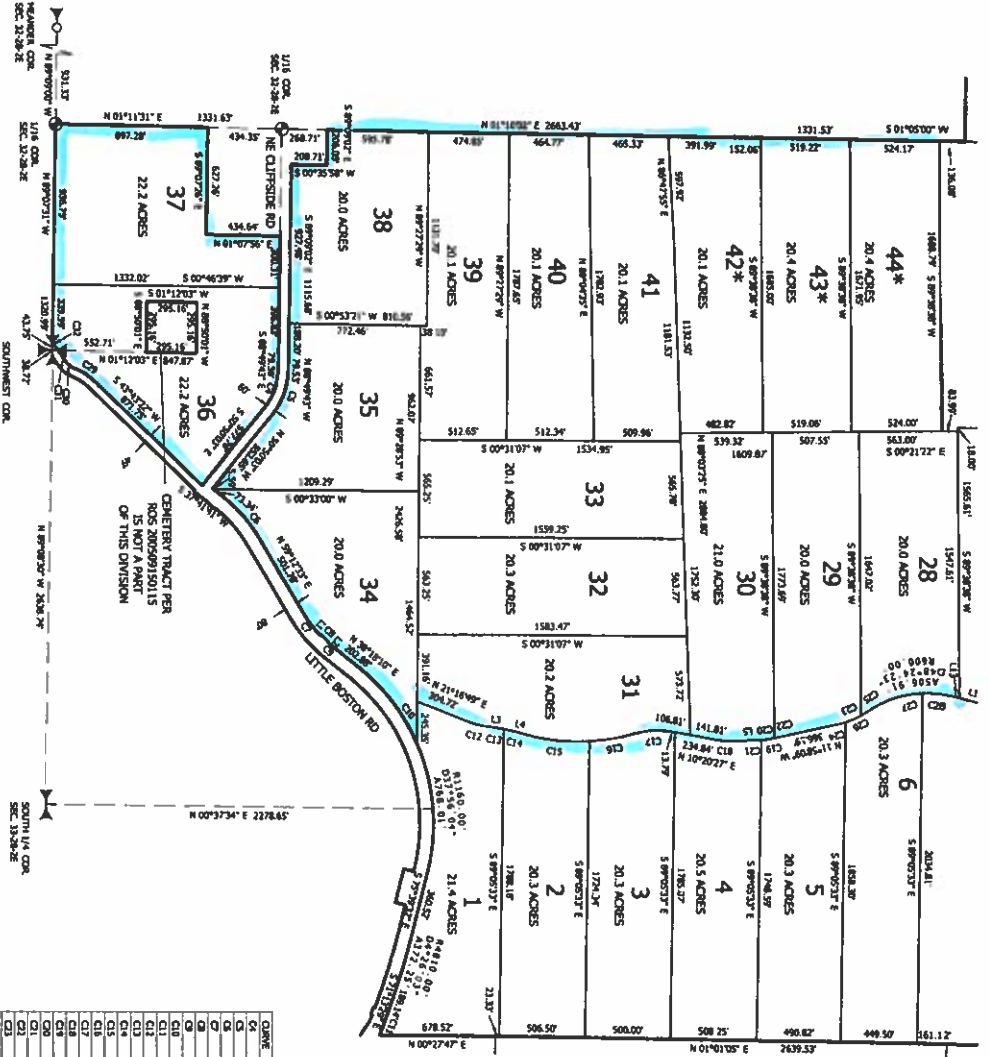
**SURVEY NOTES**

- SEE SHEET 1 OF 7 FOR SECTION DETAIL.
- SEE SHEET 2 OF 7 FOR BOUNDARY DETAIL.
- SEE SHEET 3 OF 7 FOR ORIGINAL LEGAL DESCRIPTIONS.
- EASEMENTS OF RECORD ARE NOT SHOWN HEREON.
- THE EXTENSION LINES OF THE BOUNDARY SHOWN ON SHEET 2 OF 7 WERE NOT INSPECTED FOR ENCROACHMENTS.
- EXTENSION DOCUMENT BASED UPON LEGAL DESCRIPTION PER LAMBERT TITLE SUBDIVISION GUARANTEE ORDER NO. MH-20552869-10 SUPPLEMENTAL NO. 3 DATED APRIL 17, 2009.
- SURVEY PERFORMED WITH A 3" TOTAL STATION AND GPS USING THALESER AND RADIAL METHODS. SURVEY METERS ON EXCEEDS ACCURACY REQUIREMENTS CONTAINED IN WAC 332.130.080.

THIS DIVISION MAP OF HANSVILLE NORTH IS BEING RECORDED FOR LAND UNDER FOR 58117200 AND KITSAP COUNTY CODE 839V(A)(1).

THIS IS A RE-RECORDING OF RECORD OF SURVEY RECORDED UNDER ADEPTOR'S FILE NUMBER 200902130023, THE NORTH 20 FEET AND THE WEST 20 FEET OF THE NORTHEAST QUARTER OF THE NORTHEAST QUARTER OF SECTION 32, TOWNSHIP 28 NORTH, RANGE 2 EAST, W.M., WHERE SHOWN AS RIGHT-OF-WAY. IT HAS NOW BEEN DETERMINED THAT THE RIGHT-OF-WAY WAS VACATED IN 1967. COMMISSIONERS JOURNALS, VOL. 9, PAGE 272.

• THE ADDITION OF THIS VACATED RIGHT-OF-WAY AFFECTS LOTS 42, 43, 44 AND 45 OF THIS DIVISION MAP.



**The map is for your aid in locating your land with reference to streets and other parcels. While it is believed to be correct, the company assumes no liability for any loss occurring by reason of reliance thereon.**

**LAND TITLE CO.**



LINE	BEARING	ANGLE	LENGTH	DELTA	ANGLE
C1	370.00'	262.19'	300.00'	300.00'	300.00'
C2	430.00'	262.19'	300.00'	300.00'	300.00'
C3	490.00'	315.43'	217.95'	217.95'	217.95'
C4	720.00'	174.88'	141.12'	141.12'	141.12'
C5	710.00'	21.77'	1.7524'	1.7524'	289.914'
C6	1100.00'	568.99'	289.914'	289.914'	289.914'
C7	558.00'	431.12'	157.919'	157.919'	157.919'
C8	658.00'	194.17'	67.237'	67.237'	67.237'
C9	658.00'	56.47'	67.237'	67.237'	67.237'
C10	1200.00'	795.46'	397.734'	397.734'	397.734'
C11	200.00'	228.10'	200.00'	200.00'	200.00'
C12	600.00'	84.99'	87.914'	87.914'	87.914'
C13	600.00'	18.84'	19.921'	19.921'	19.921'
C14	600.00'	82.37'	19.921'	19.921'	19.921'
C15	500.00'	31.51'	5.9211'	5.9211'	5.9211'
C16	500.00'	57.578'	5.9211'	5.9211'	5.9211'
C17	500.00'	194.84'	32.5792'	32.5792'	32.5792'
C18	500.00'	141.88'	32.5792'	32.5792'	32.5792'
C19	150.00'	50.25'	37.1807'	37.1807'	37.1807'
C20	371.80'	57.88'	37.1807'	37.1807'	37.1807'
C21	4911.56'	53.87'	47.9766'	47.9766'	47.9766'



**WestSound Engineering, Inc**

217 S.W. Wilkins Drive  
Phone (360) 876-3770  
E-mail: wse@westsoundeng.com <http://www.westsoundeng.com>

Port Orchard, Wa. 98366  
Fax (360) 876-0439

DATE:	6/1/2009
SCALE:	1" = 500'
JOB NO.:	1786.2
DRAWN BY:	TJB
CHECKED BY:	TJB
SHEET 5 OF 7	

**V712 P163 2009106090338**